



INFRARED WIRELESS CONFERENCE SYSTEM

TS-820 / 920 Series

Installation made easier than ever thanks to infrared system coupled with clear sound amplification. Wireless conference system provides flexible adaptation to diverse styles of conference.



Professional, Practical, Pyramid-inspired
Upgrade your boardroom to executive mode

Minimal Contour

With its pyramid-shaped outline, the rear view is minimized to reduce the impact of visual noise on the desk.



Natural appearance,
as if protruding from the desk.

Dignified Solid Shape

The solid design creates a formal and impressive atmosphere for conferences.



Excellent Telexistence

A full spread surface that creates a direct dialogue with the speaker.

High Conference Quality

The shape of the unit for a conference hall is straightforward in its design; the rear view suppresses an obscured view. The voice is as if the speaker was facing you. The unit's design relieves the impression of "talking through equipment" and fosters a more direct feeling of speech.

High Audio Quality

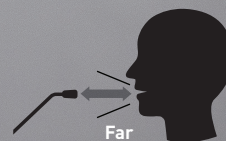
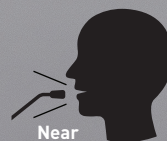
Carefully designed audio processing and hardware for enhanced audio performance

Stress-free Conference

Advanced feedback suppressor minimizes acoustic feedback.

Uniform Sound Volume

Auto Gain Control function provides uniform sound volume by adjusting the gain based on how loud or soft the person's voice is.

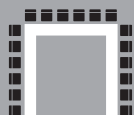


Supporting smoother management of small to medium-scale conferences



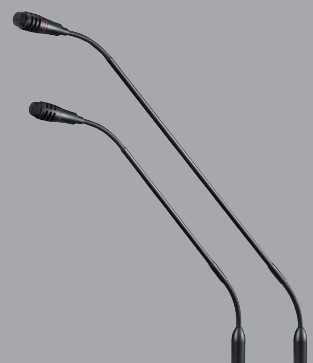
Wireless Units for System Flexibility

Wireless feature makes the system ideal for any conference apt to change the number of participants or layout.



Selectable Microphones

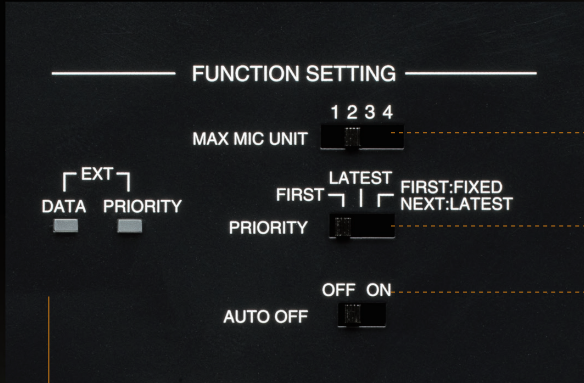
Long or short microphones can be used depending on requirements.



Key Functions



4 2-language conference capability
*TS-920 Series only



1 Selectable number of open microphones

2 Three of microphone operating modes

3 Mic auto-off function automatically turns off the mic after 30-second silence



5 3-choice voting function for quick voting and vote counting
*TS-920 Series only

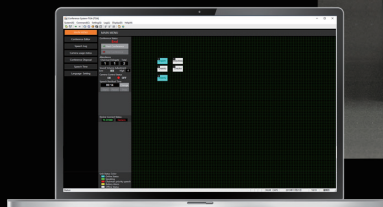


Built-in audio recording

Conference can be recorded in mp3 format on a widely available USB memory or internal memory.
*When TS-820RC or TS-920RC is used.



*The image is for illustration purpose only.



External Control

Available remote control protocol enables conference operation on custom-made software as well as integration with other devices such as cameras.



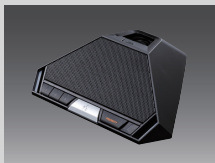
System Configuration / Components

TS-920 Series



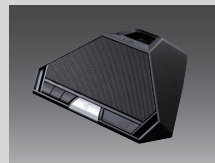
TS-920RC Central Unit with recording function

- Main unit of the system
- Up to 192 conference unit controllable
- 2 x Mic In (Main/Sub), 3 x AUX In (Main/Sub/Main and Sub) Line Out, Rec Out, Headphone monitor out, EQ in/out
- Function setting – Number of open microphones, Auto mic-off function, Speech priority selector, Feedback suppressor
- Recording capability to USB and internal memory
- Voting result indicator
- Rack-mountable with MB-TS920 optional bracket



TS-921 Chairman Unit

- Chairman unit for basic discussion
- Priority button
- Equipped with voting function
- 0.2W monitor speaker
- Audio monitoring switch (Main or Sub)
- 2 headphone jacks with individual volume control
- Approx. 10 hours continuous operation with the use of optional rechargeable lithium-ion battery



TS-922 Delegate Unit

- Delegate unit for basic discussion
- Equipped with voting function
- 0.2W monitor speaker
- Audio monitoring switch (Main or Sub)
- 2 headphone jacks with individual volume control
- Approx. 10 hours continuous operation with the use of optional rechargeable lithium-ion battery

Common Components (TS-820/920 Series)



TS-923 Microphone

- Gooseneck microphone with two flexible sections
- Unidirectional electret condenser microphone
- Red lights ring to display talk released
- XLR-4-32 connector
- Sensitivity:-37 dB (1 kHz, 0 dB = 1 V / PA)
- Frequency response: 100 Hz - 13 kHz
- Length: 470 mm (1.54 ft)



TS-924 Microphone (Long)

- Gooseneck microphone with two flexible sections
- Unidirectional electret condenser microphone
- Red lights ring to display talk released
- XLR-4-32 connector
- Sensitivity:-37 dB (1 kHz, 0 dB = 1 V / PA)
- Frequency response: 100 Hz - 13 kHz
- Length: 620 mm (2.03 ft)



TS-905 Infrared Transmitter/Receiver

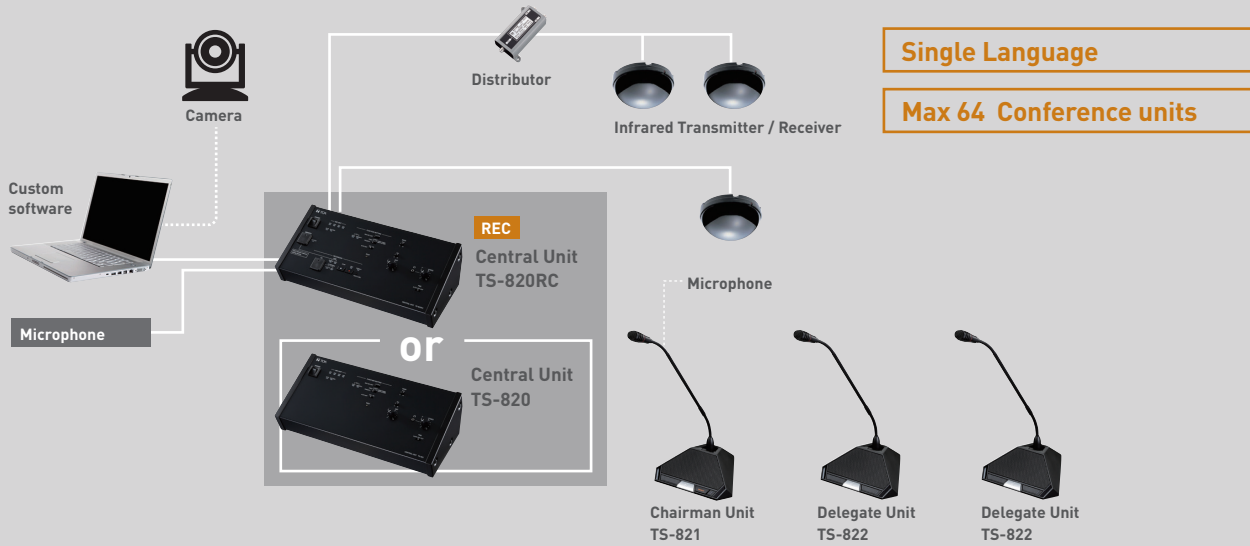
- Communication between the Central Unit and Chairman/Delegate Unit performed by means of infrared signals
- Variety of mounting methods: ceiling, wall and microphone stand
- Designed for low ceiling applications, e.g. ceiling height 2.5 - 4.5 m (8.2 - 14.76ft)



TS-907 Infrared Transmitter/Receiver

- Communication between the Central Unit and Chairman/Delegate Unit performed by means of infrared signals
- Variety of mounting methods: ceiling, wall and microphone stand
- Designed for high ceiling applications, e.g. ceiling height 5.0 - 7.0m (16.4 - 22.97ft)

TS-820 Series



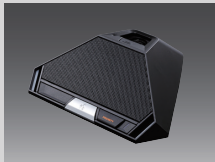
TS-820RC Central Unit with recording function

- Main unit of the system
- Up to 64 conference unit controllable
- Mic In, AUX In, Line Out, Rec Out, Headphone monitor out, EQ in/out
- Recording capability to USB and internal memory
- Function setting – Number of open microphones, Auto mic-off function, Speech priority selector, Feedback suppressor
- Rack-mountable with MB-TS920 optional bracket



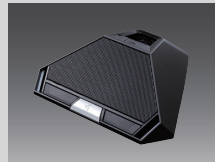
TS-820 Central Unit

- Main unit of the system
- Up to 64 conference units controllable
- Mic In, AUX In, Line Out, Rec Out, Headphone monitor out, EQ in/out
- Function setting – Number of open microphones, Auto mic-off function, Speech priority selector, Feedback suppressor
- Rack-mountable with MB-TS920 optional bracket



TS-821 Chairman Unit

- Chairman unit for basic discussion
- Priority button
- 0.2W monitor speaker
- 2 headphone jacks with individual volume control
- Approx. 10 hours continuous operation with the use of optional rechargeable lithium-ion battery



TS-822 Delegate Unit

- Delegate unit for basic discussion
- 0.2W monitor speaker
- 2 headphone jacks with individual volume control
- Approx. 10 hours continuous operation with the use of optional rechargeable lithium-ion battery



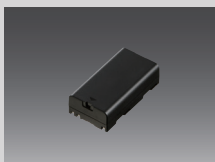
YW-1022 Distributor

- Signal distributor used to expand the number of connectable Infrared Transmitter/Receiver units
- For 2-branch distribution



YW-1024 Distributor

- Signal distributor used to expand the number of connectable Infrared Transmitter/Receiver units
- For 4-branch distribution



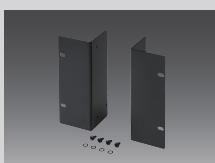
BP-920 Rechargeable Lithium-ion Battery

- Designed for use with the Chairman/Delegate Units
- Nominal Voltage: 7.4 VDC
- Weight: 82 g



BC-920 Battery Charger

- Dedicated battery charger for the BP-920
- Permits up to 8 batteries to be simultaneously charged within up to 5 hours
- Finish: Steel, black, paint
- Weight: 1.1 kg



MB-TS920 Rack Mounting Bracket

- Designed for exclusive use with TS-820, TS-820RC and TS-920RC.

