




PARTYBOX ON-THE-GO



OWNER'S MANUAL

IMPORTANT SAFETY INSTRUCTIONS

For all products:

1. Read these instructions.
2. Keep these instructions.
3. Heed all warnings.
4. Follow all instructions.
5. Do not block any ventilation openings. Install this apparatus in accordance with the manufacturer's instructions.
6. Do not install this apparatus near any heat sources such as radiators, heat registers, stoves or other apparatus (including amplifiers) that produce heat.
7. Do not defeat the safety purpose of the polarized or grounding-type plug. A polarized plug has two blades with one wider than the other. A grounding-type plug has two blades and a third grounding prong. The wide blade or the third prong is provided for your safety. If the provided plug does not fit into your outlet, consult an electrician for replacement of the obsolete outlet.
8. Protect the power cord from being walked on or pinched, particularly at plugs, convenience receptacles and the point where they exit from the apparatus.
9. Use only attachments/accessories specified by the manufacturer.
10. Use only with the cart, stand, tripod, bracket or table specified by the manufacturer or sold with the apparatus. When a cart is used, use caution when moving the cart/apparatus combination to avoid injury from tip-over. 
11. Unplug this apparatus during lightning storms or when unused for long periods of time.
12. To disconnect this apparatus from the AC mains completely, disconnect the power-supply cord plug from the AC receptacle.
13. The mains plug of the power-supply cord shall remain readily operable.
14. Do not expose batteries to excessive heat such as sunshine, fire or the like.
15. This apparatus is intended to be used only with the power supply and/or charging cable provided by the manufacturer.

CAUTION

RISK OF ELECTRIC SHOCK. DO NOT OPEN.



THE LIGHTNING FLASH WITH AN ARROWHEAD SYMBOL, WITHIN AN EQUILATERAL TRIANGLE, IS INTENDED TO ALERT THE USER TO THE PRESENCE OF UNINSULATED "DANGEROUS VOLTAGE" WITHIN THE PRODUCT'S ENCLOSURE THAT MAY BE OF SUFFICIENT MAGNITUDE TO CONSTITUTE A RISK OF ELECTRIC SHOCK TO PERSONS.



THE EXCLAMATION POINT WITHIN AN EQUILATERAL TRIANGLE IS INTENDED TO ALERT THE USER TO THE PRESENCE OF IMPORTANT OPERATING AND MAINTENANCE (SERVICING) INSTRUCTIONS IN THE LITERATURE ACCOMPANYING THE PRODUCT.

WARNING: TO REDUCE THE RISK OF FIRE OR ELECTRIC SHOCK, DO NOT EXPOSE THIS APPARATUS TO RAIN OR MOISTURE.

Caution FCC and IC statement for users (USA and Canada only)

This device complies with part 15 of the FCC Rules. Operation is subject to the following two conditions: (1) This device may not cause harmful interference, and (2) this device must accept any interference received, including interference that may cause undesired operation.

CAN ICES-3(B)/NMB-3(B)

Federal Communication Commission Interference Statement

This equipment has been tested and found to comply with the limits for a Class B digital device, pursuant to Part 15 of the FCC Rules. These limits are designed to provide reasonable protection against harmful interference in a residential installation. This equipment generates, uses and can radiate radio frequency energy and, if not installed and used in accordance with the instructions, may cause harmful interference to radio communications. However, there is no guarantee that interference will not occur in a particular installation. If this equipment does cause harmful interference to radio or television reception, which can be determined by turning the equipment off and on, the user is encouraged to try to correct the interference by one or more of the following measures:

- Reorient or relocate the receiving antenna.
- Increase the separation between the equipment and receiver.
- Connect the equipment into an outlet on a circuit different from that to which the receiver is connected.
- Consult the dealer or an experienced radio/TV technician for help.

Caution: Changes or modifications not expressly approved by HARMAN could void the user's authority to operate the equipment.

For Products That Transmit RF Energy

FCC AND IC INFORMATION FOR USERS

This device complies with Part 15 of the FCC rules and Industry Canada license-exempt RSS standard(s). Operation is subject to the following two conditions: (1) This device may not cause harmful interference; and (2) this device must accept any interference received, including interference that may cause undesired operation.

FCC/IC Radiation Exposure Statement

This equipment complies with FCC/IC RSS-102 radiation exposure limits set forth for an uncontrolled environment.

FCC Caution:

High power radars are allocated as primary users of the 5.25 to 5.35 GHz and 5.65 to 5.85 GHz bands. These radar stations can cause interference with and/or damage this device. No configuration controls are provided for this wireless equipment allowing any change in the frequency of operations outside the FCC grant of authorization for US operation according to Part 15.407 of the FCC rules.

IC Caution:

User should also be advised that:

(i) The device for operation in the band 5150-5250 MHz is only for indoor use to reduce the potential for harmful interference to co-channel mobile satellite systems; (ii) the maximum antenna gain permitted for devices in the bands 5250-5350 MHz and 5470-5725 MHz shall comply with the e.i.r.p. Limit; and (iii) The maximum antenna gain permitted for devices in the band 5725-5825 MHz shall comply with the e.i.r.p. Limits specified for point-to-point and non-point-to-point operation as appropriate. (iv) Users should also be advised that high-power radars are allocated as primary users (i.e. priority users) of the bands 5250-5350 MHz and 5650-5850 MHz and that these radars could cause interference and/or damage to LE-LAN devices.

Exposure of humans to RF fields (RSS-102)

The computers employ low gain integral antennas that do not emit RF field in excess of Health Canada limits for the general population; consult Safety Code 6, obtainable from Health Canada's Website at <http://www.hc-sc.gc.ca/>

The radiated energy from the antennas connected to the wireless adapters conforms to the IC limit of the RF exposure requirement regarding IC RSS-102, Issue 5 clause 4. SAR tests are conducted using recommended operating positions accepted by the FCC/RSS with the device transmitting at its highest away from the body. Non-compliance with the above restrictions may result in a violation of FCC RF exposure guidelines.

Use Restriction: Attention in France, the operation is limited to indoor use within the band 5150-5350 Mhz.

For Products with Radio Receivers That Can Use an External Antenna (USA ONLY)

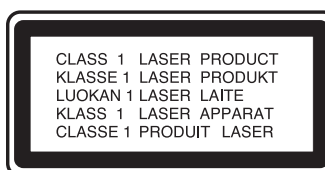
CATV (Cable TV) or Antenna Grounding

If an outside antenna or cable system is connected to this product, be certain that it is grounded so as to provide some protection against voltage surges and static charges. Section 810 of the National Electrical Code (NEC), ANSI/NFPA No. 700-1984, provides information with respect to proper grounding of the mast and supporting structure, grounding of the lead-in wire to an antenna discharge unit, of grounding conductors, location of antenna discharge unit, connection to grounding electrodes and requirements of the electrode.

Note to CATV System Installer

This reminder is provided to call the CATV(cable TV) system installer's attention to article 820-40 of the NEC, which provides guidelines for proper grounding and, in particular, as close to the point of cable entry as possible.

Caution: This product uses a laser system. To prevent direct exposure to the laser, do not open the cabinet enclosure or defeat any of the safety mechanisms provided for your protection. Do NOT START INTO THE LASER BEAM. To ensure proper use of this product, please read the owner's manual carefully and retain it for future use. Should the unit require maintenance or repair, please contact your local JBL service. Refer servicing to qualified personnel only.



FOR ALL EU COUNTRIES

For products that include audio out

Prevention of hearing loss



Caution: Permanent hearing loss may occur if earphones or headphones are used at high volume for prolonged periods of time.

For France, the products have been tested to comply with Sound Pressure Level requirement laid down in the applicable NF EN 50332 L.5232-1.

Note:

- To prevent possible hearing damage, do not listen to high volume levels for long periods.

WEEE Notice

The Directive on Waste Electrical Equipment (WEEE), which entered into force as European law on 14/02/2014, resulted in a major change in the treatment of electrical equipment at end-of-life.

The purpose of this Directive is, a first priority, the prevention of WEEE, and in addition, to promote the reuse, recycling and other forms of recovery of such wastes as so as to reduce disposal.

The WEEE logo on the product or on its box indicating collection for electrical and electronic equipment consists of the crossed-out wheeled bin, as shown below.



This product must not be disposed of or dumped with your other household waste. You are liable to dispose of all your electronic or electrical waste equipment by relocating over to the specified collection point for recycling of such hazardous waste. Isolated collection and proper recovery of your electronic and electrical waste equipment at the time of disposal will allow us to help conserving natural resources. Moreover, proper recycling, and collection points, please contact your local city center, household waste disposal service, shop from where you purchased the equipment, or manufacturer of the equipment.

RoHS Compliance

This product is in compliance with Directive 2011/65/EU of the European Parliament and of the Council of 8 June 2011 on the restriction of the use of certain hazardous substances in electrical and electronic equipment.

For Products that includes Batteries

EU Batteries Directive 2013/56/EU

A new battery directive 2013/56/EU on Battery and Accumulator replacing directive entered into force on the 01/07/2015. The directive applies to all types of batteries and accumulator (AA, AAA, button cells, rechargeable packs) including those incorporated into appliances except for military, medical and power tool applications. The directive sets out rules for collection, treatment, recycling and disposal of batteries, and aims to prohibit certain hazardous substances and to improve environmental performance of batteries and all operators in the supply chain.

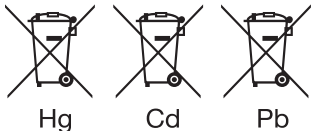
Instructions for Users on Removal, Recycling and Disposal of Batteries

The remove the batteries from your equipment or remote control, reverse the procedure described in the owner's manual for inserting batteries. For products with a built-in battery that lasts for the lifetime of the product, removal may not be possible for the user. In this case, recycling or recovery, it becomes necessary to replace such a battery, this procedure must be performed by authorized services centers. In the European Union and other locations, it is illegal to dispose of any battery with household trash. All batteries must be disposed of in an environmentally sound manner. Contact your local waste-management officials for information regarding the environmentally sound collection, recycling and disposal of used batteries.

WARNING: Danger of explosion if battery is incorrectly replaced. To reduce risk of fire or burns, don't disassemble, crush, puncture, short external contact, expose to temperature above 60°C (140°F), or dispose of in fire or water. Replace only with specified batteries. The symbol indicating 'separate collection' for all batteries and accumulators shall be crossed-out wheeled bin shown below:



In case of batteries, accumulators and button cells containing more than 0.0005 mercury, more than 0.002% cadmium or more than 0.004% lead, shall be marked with the chemical symbol for the metal concerned: Hg, Cd or Pb respectively. Please Refer to the below symbol:



WARNING: DO NOT INGEST BATTERIES, CHEMICAL BURN HAZARD [the remote supplied with] This product contains a coin/button cell battery. If the coin/button cell battery is swallowed, it can cause severe international burns in just 2 hours and can lead to death. Keep new and used batteries away from children. If you think batteries might have been swallowed or placed inside any part of body, seek immediate medical attention.

For All Products Except Those with Wireless Operation

HARMAN International hereby declares that this equipment is in compliance with EMC 2014/30/EU Directive, LVD 2014/35/EU Directive. The declaration of conformity may be consulted in the support section of our Web Site, accessible from www.jbl.com.

For All Products with Wireless Operation

HARMAN International hereby declares that this equipment is in compliance with the essential requirements and other relevant provisions of Directive 2014/53/EU. The declaration of conformity may be consulted in the support section of our Web Site, accessible from www.jbl.com.

TABLE OF CONTENTS

IMPORTANT SAFETY INSTRUCTIONS	2
--------------------------------------	----------

1. INTRODUCTION	6
------------------------	----------

2. WHAT'S IN THE BOX	6
-----------------------------	----------

3. PRODUCT OVERVIEW	7
----------------------------	----------

3.1 TOP PANEL	7
---------------	---

3.2 BACK PANEL	7
----------------	---

4. PLACEMENT	8
---------------------	----------

5. POWER ON	8
--------------------	----------

6. USING YOUR PARTYBOX	9
-------------------------------	----------

6.1 BLUETOOTH CONNECTION	9
--------------------------	---

6.2 USB CONNECTION	9
--------------------	---

6.3 AUX CONNECTION	10
--------------------	----

6.4 MUSIC CONTROL	10
-------------------	----

6.5 MIXING SOUND WITH A MICROPHONE AND / OR GUITAR	10
---	----

6.6 CHARGING YOUR MOBILE DEVICE	12
---------------------------------	----

7. CARRYING YOUR PARTYBOX	12
----------------------------------	-----------

8. ADVANCED USAGE	13
--------------------------	-----------

8.1 LIGHT EFFECT	13
------------------	----

8.2 TWS MODE	13
--------------	----

8.3 FACTORY RESET	13
-------------------	----

8.4 IPX4	14
----------	----

9. SPECIFICATIONS	14
--------------------------	-----------

10. TROUBLESHOOTING	15
----------------------------	-----------

11. COMPLIANCE	15
-----------------------	-----------

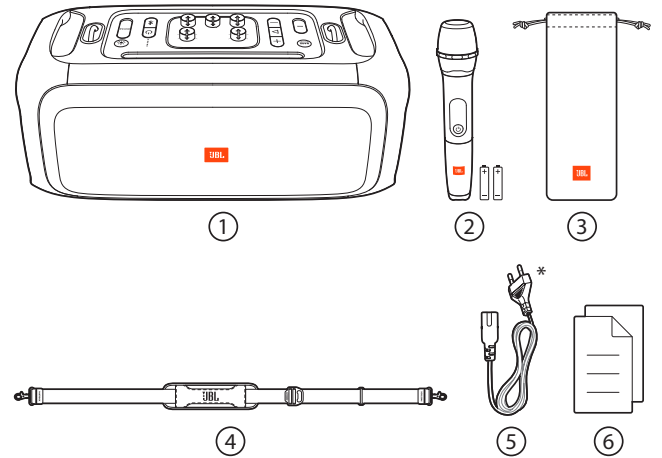
12. TRADEMARK	16
----------------------	-----------

1. INTRODUCTION

Congratulations on your purchase! This manual includes information about **PARTYBOX ON-THE-GO** speakers. We encourage you to take a few minutes to read this manual, which describes the product and includes step-by-step instructions to help you to set up and get started. Read and understand all the safety instructions before using your product.

If you have any questions about these products, their installation or their operation, please contact your retailer or customer service, or visit us at www.jbl.com.

2. WHAT'S IN THE BOX

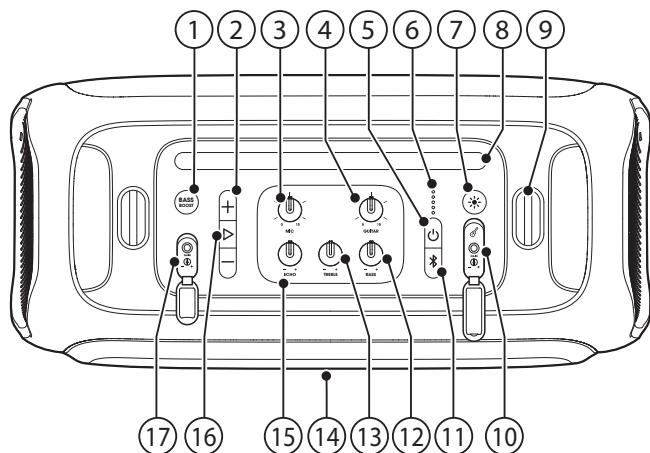


- 1) Main unit
- 2) Wireless microphone (with two Alkaline AA batteries)*
- 3) Microphone pouch
- 4) Shoulder strap
- 5) Power cord*
- 6) Quick Start Guide, Safety Sheet, Warranty Card

*Power cord quantity, plug type and microphone quantity vary by regions.

3. PRODUCT OVERVIEW

3.1 Top Panel



- 1) **BASS BOOST**
 - Enhances the bass level: level 1, level 2, or off.
- 2) **+ / -**
 - Adjust main volume.
- 3) **MIC volume**
 - Adjust microphone volume (if connected).
- 4) **GUITAR volume**
 - Adjust guitar volume (if connected).
- 5) **⏻**
 - Turn the power on or off.
- 6) **●●●●●**
 - Battery level indicator
- 7) **⚙️**
 - Press to switch between different light patterns.
- 8) **Mobile device dock**
- 9) **Shoulder strap hooks**
- 10) **GUITAR input**
 - : Connect to a guitar.
 - GAIN**: Adjust the guitar gain.
- 11) **⚙️**
 - Press to enter Bluetooth pairing mode.
 - Press and hold for more than 5 seconds to enter True Wireless Stereo (TWS) pairing mode.
 - Press and hold for more than 20 seconds to forget all paired devices.
- 12) **- BASS +**
 - Adjust the bass level.
- 13) **- TREBLE +**
 - Adjust the treble level.
- 14) **LED ring**
- 15) **- ECHO +**
 - Adjust the echo level.

16) ▶

- Play, pause or resume.

17) MIC input

- Microphone socket: Connect to a microphone.
- GAIN**: Adjust the microphone gain.

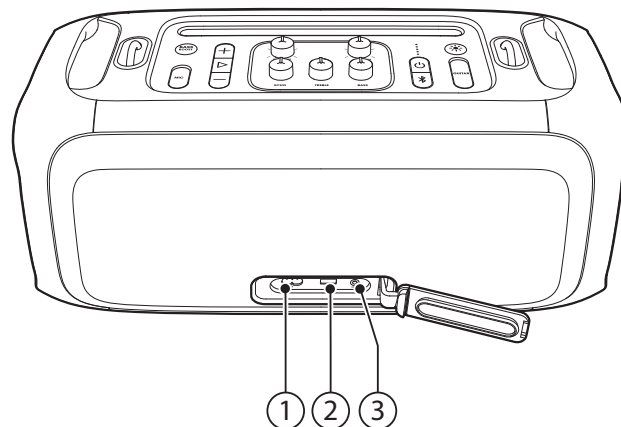
Caution:

- Do not look directly at the light-emitting parts when the speaker lights are turned on.

LED behavior

⏻	○ Solid white	Power on
	● Solid amber	Standby
	● Off	Power off
⚙️	⚙️ Flashing white quickly	Pairing
	○ White (Constant)	Connected
	● Off	Not connected
BASS BOOST	○ Solid white	On
	● Off	Off
●●●●●	● Flashing red quickly	Low battery
	⚙️ Flashing white slowly	Charging
	○ Solid white	The speaker is fully charged when all the five indicators turn solid white.

3.2 Back Panel



1) ⚡ (AC)

- Connect to AC power supply.

2) (USB)

- Connect to a USB storage device.
- Charge your mobile device.

3) (AUX)

- Connect to an external audio device through a 3.5 mm audio cable (not supplied).

4. PLACEMENT

Caution:

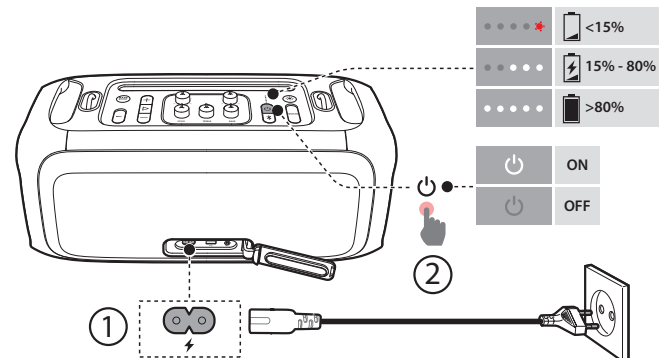
- Do not sit on the speaker or push it. Otherwise, it may result in malfunction and cause personal injury and /or property damage.

Place the speaker on a flat, stable surface and ensure that the rubber feet side is down.

5. POWER ON

Cautions:

- Use the provided power cord only.
- You can use either AC power or the built-in battery as power supply to the speaker.



1. Connect AC power.
 - To use the built-in battery, disconnect AC power after charging the speaker.
2. Press \mathcal{U} to power on.

Tips:

- Fully charge the speaker before first-time use to prolong the lifespan of the built-in battery.
- To protect battery lifespan, fully charge at least once every 3 months. Battery life will vary due to usage patterns and environmental conditions.
- You can check the battery level by pressing any button on the speaker.
- The speaker switches to standby mode automatically after 20 minutes of inactivity. You can press \mathcal{U} on the speaker to switch to normal operation.

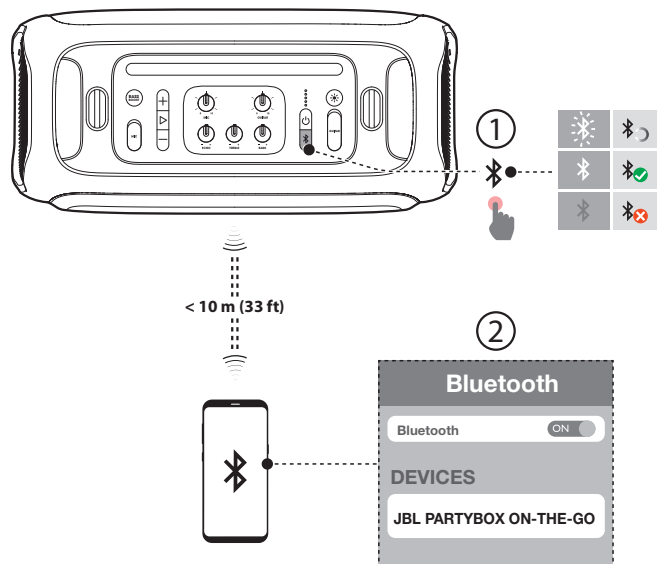
6. USING YOUR PARTYBOX

Notes:

- Only one sound source can be played at a time. The priority order is USB -> Bluetooth -> AUX.
- Starting a source with higher priority will always interrupt a source with lower priority.
- To start a source with lower priority, stop the source with higher priority first.

6.1 Bluetooth Connection

You can use the speaker with your Bluetooth enabled smartphone or tablet.



1. Press on the speaker to enter Bluetooth pairing mode.
2. Choose “**JBL PARTYBOX ON-THE-GO**” on your Bluetooth device to connect.
3. Once successfully connected, you can stream audio from your Bluetooth device to this speaker.

Notes:

- This speaker can memorize a maximum of 8 paired devices. The ninth paired device will replace the first one.
- Enter “0000” if a PIN code is requested for connection to a Bluetooth device.
- Bluetooth performance can be affected by the distance between this product and your Bluetooth device and the environment of operation.

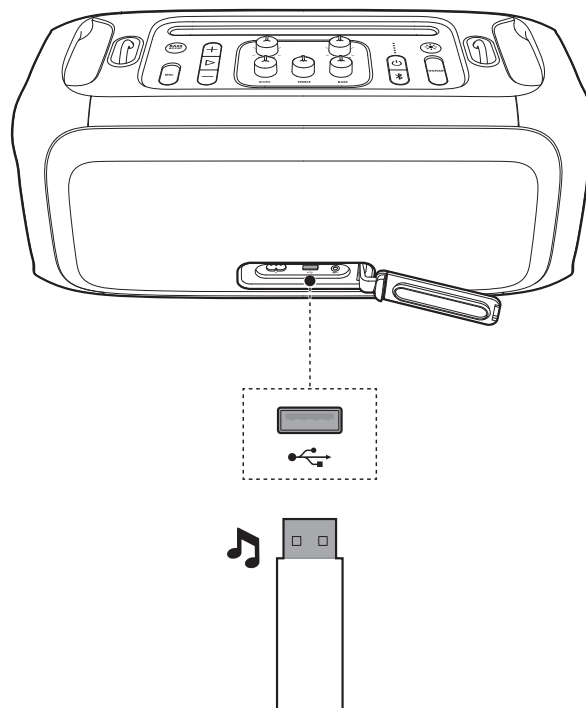
To terminate the Bluetooth-enabled device:

- Turn off this speaker, or
- Disable Bluetooth on your device.

To reconnect the Bluetooth enabled device:

- When you turn on this speaker next time, it tries to reconnect the last connected device automatically.
- If not, manually select “**JBL PARTYBOX ON-THE-GO**” on your Bluetooth device to connect.

6.2 USB Connection



Plug a USB storage device that contains playable audio contents into the USB port of the speaker.

→ Audio playback will start automatically.

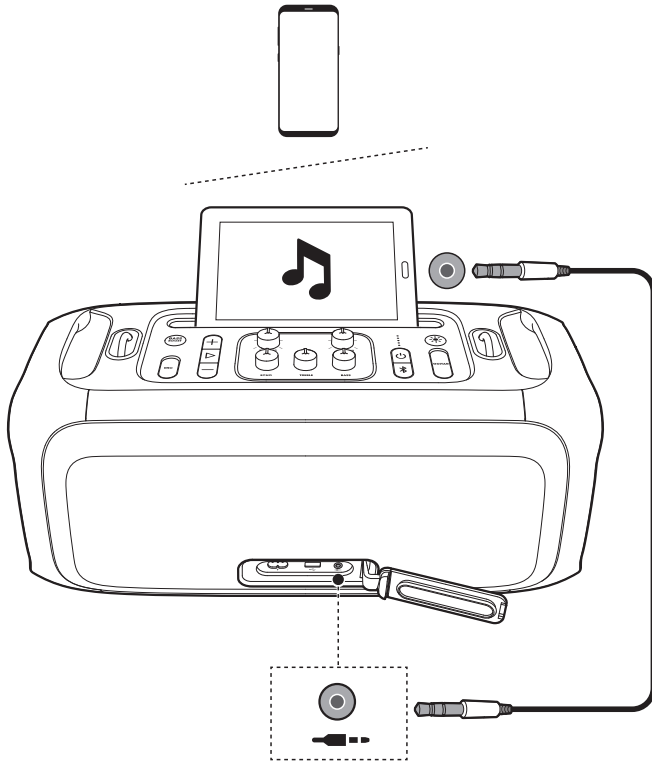
Tip:

- The speaker plays audio files on the USB storage device from the root folder to the last level of subfolders in alphabetical sequence. Up to 8 levels of subfolders are supported.

Supported audio formats

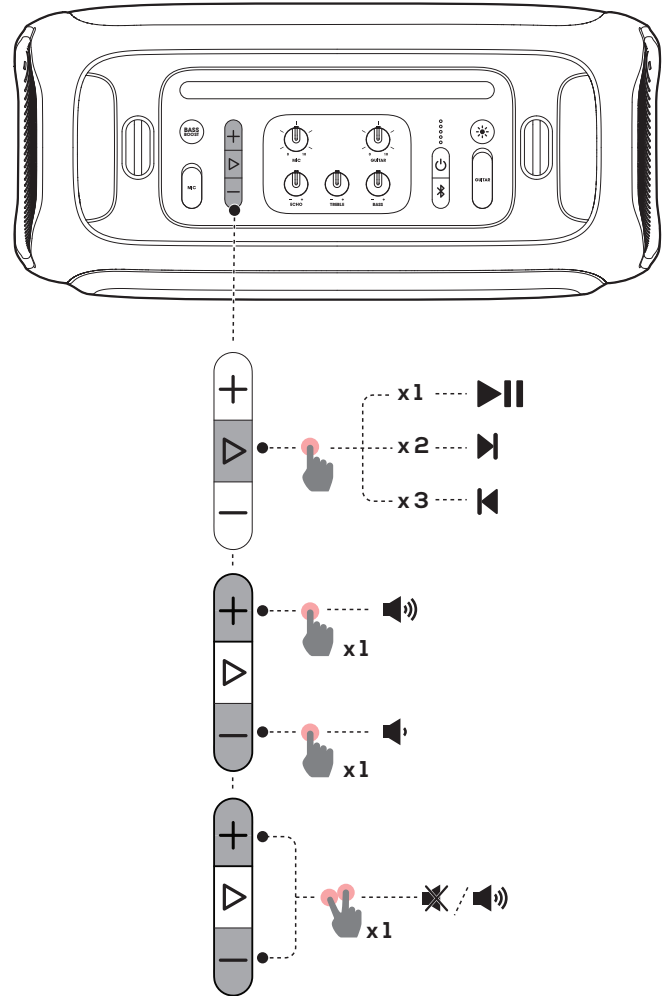
Extension	Codec	Sample rate	Bitrate
WAVE	PCM	44.1KHz ~ 192KHz	< 5Mbps
	LPCM	44.1KHz ~ 192KHz	< 5Mbps
	IMA_ADPCM	44.1KHz ~ 192KHz	< 5Mbps
	MPEG	44.1KHz ~ 192KHz	< 5Mbps
MP3	MULAW	44.1KHz ~ 192KHz	< 5Mbps
	MPEG1 layer1/2/3	32KHz ~ 48KHz	32Kbps ~ 320Kbps
	MPEG2 layer1/2/3	16KHz ~ 24KHz	8Kbps ~ 160Kbps
WMA	MPEG2.5 layer3	8KHz ~ 12KHz	8Kbps ~ 160Kbps
		≤ 320Kbps	8Kbps ~ 48Kbps

6.3 AUX Connection



1. Connect an external audio device to the speaker through a 3.5 mm audio cable (not supplied).
2. Start audio playback on the external device.

6.4 Music Control



- Press once to pause or resume playback.
- Press twice to skip to the next track.
- Press three times to skip to the previous track.
- Press +/- to increase or decrease main volume.
- Hold the + and - buttons simultaneously to mute or unmute sound output.

Note:

- The skip operation is unavailable in AUX mode.

6.5 Mixing Sound with a Microphone and / or Guitar

By using a microphone or electric guitar (not supplied), you can mix sound with an audio source.

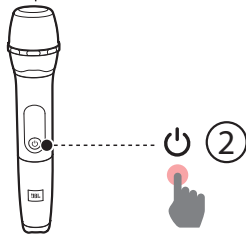
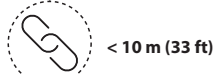
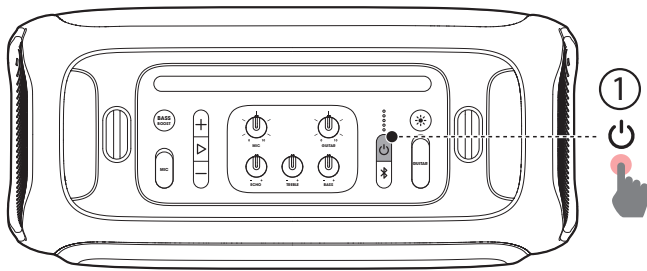
Notes:

- Always set the guitar or microphone volume to the minimum level before guitar or microphone connection / disconnection.
- Always disconnect the guitar or microphone when you are not using them.

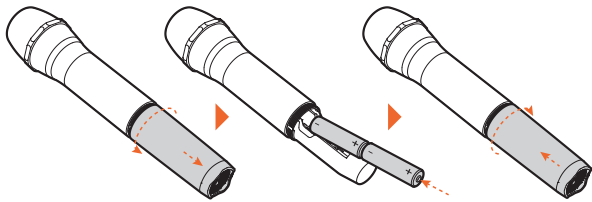
6.5.1 Connecting a Microphone

To connect the supplied wireless microphone

By default, the wireless microphone comes pre-paired with the speaker at factory.



1. Load the two Alkaline AA batteries with correct polarity.

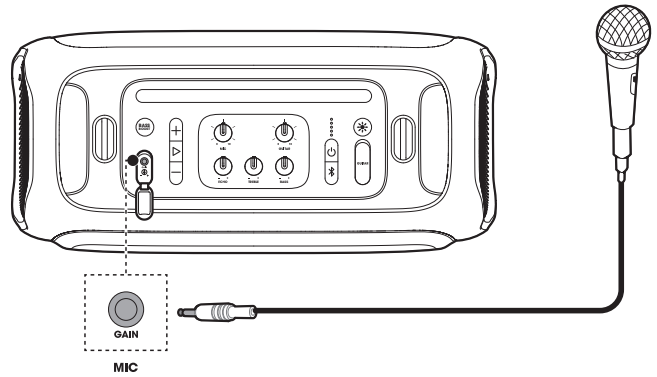


2. Turn on the speaker and supplied wireless microphone successively.
→ Wireless connection will be set up automatically.

Notes:

- The microphone powers off automatically after 10 minutes of inactivity.
- A maximum of two wireless microphones are supported. Contact your dealer for how to purchase more.

To connect a wired microphone (not supplied)



To connect a new wireless microphone

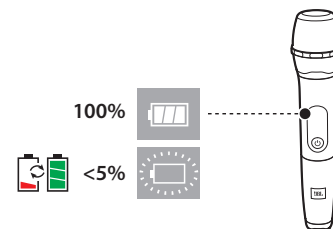
1. Turn off the speaker.
2. Turn on the new wireless microphone and place it on the top of the speaker.
3. Turn on the speaker.
→ The microphone will pair and connect with the speaker automatically within 3 minutes.

To replace wireless microphone batteries

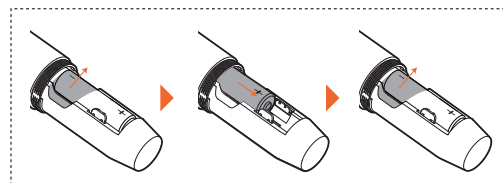
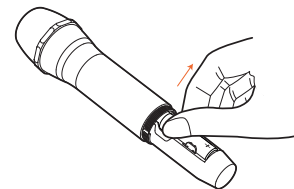
Cautions:

- Do not mix batteries (old and new or carbon and alkaline, etc.).
- Remove batteries if they are exhausted or if the microphone is not to be used for a long time.
- Batteries contain chemical substances, they should be disposed of properly.

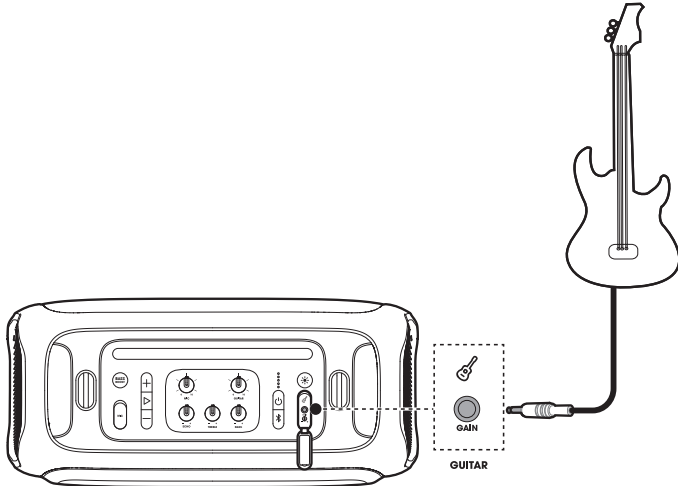
1. Check the battery level.



2. If the battery level is low, replace the old batteries with new ones.



6.5.2 Connecting a Guitar

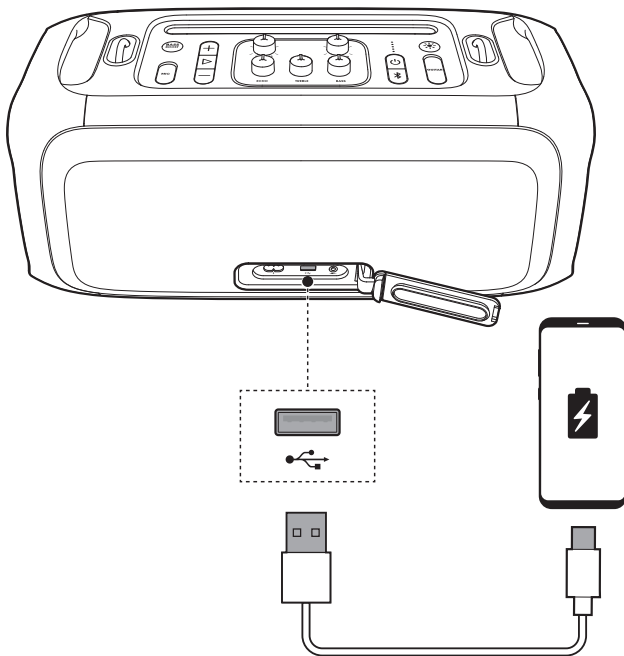


6.5.3 Mixing Sound

Sing through the microphone or play guitar.

- To adjust the volume of the audio source, press + / -.
- To adjust the volume of the microphone or guitar, rotate the **MIC** or **GUITAR** volume knob.
- To adjust the gain of the wired microphone or guitar, rotate the **GAIN** control beside the **MICROPHONE** or **GUITAR** socket respectively.
- To adjust the echo, treble and bass level of the microphone (either wireless or wired), rotate the **ECHO**, **TREBLE** and **BASS** knob respectively.

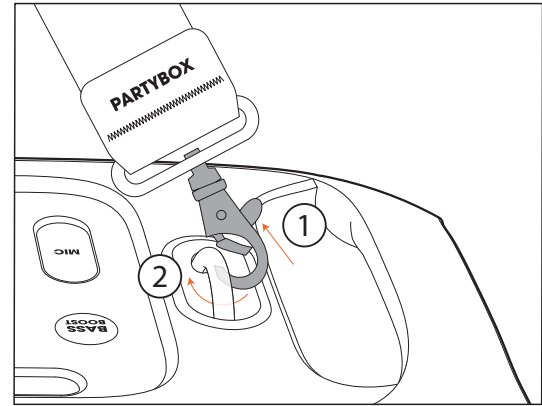
6.6 Charging Your Mobile Device



7. CARRYING YOUR PARTYBOX

Cautions:

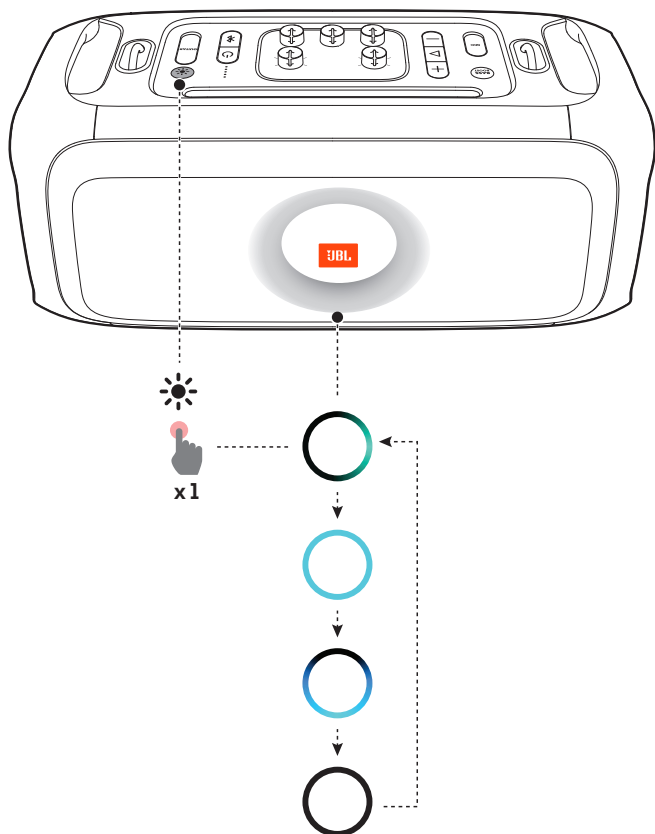
- Before carrying the speaker, ensure that all the cords are disconnected.
- To avoid personal injury and/or property damage, hold the product firmly while carrying, and while it is not being used, remove the strap.




Use the supplied shoulder strap to carry the speaker on the go.

8. ADVANCED USAGE

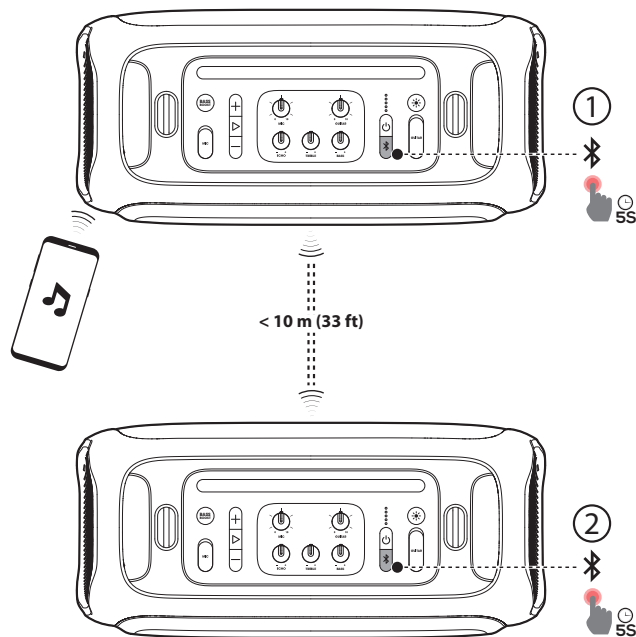
8.1 Light Effect



Press  to select your preferred light effect: rock, neon, club, or off.

8.2 TWS Mode

You can connect two PARTYBOX speakers to each other via TWS mode.



Hold  on both speakers simultaneously for more than 5 seconds.


To exit TWS mode:

Power off or hold  on either speaker for more than 5 seconds.

Tips:

- It may be necessary to forget the PARTYBOX on the source device in order to reconnect to Bluetooth.
- By default, the speaker connected to your Bluetooth device acts as the primary speaker (left channel), while the other one acts as the secondary speaker (right channel).

8.3 Factory reset

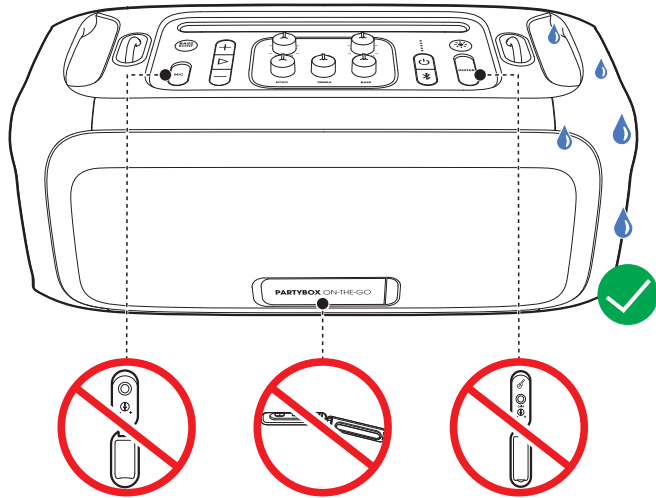
To restore the factory settings, hold + and  for more than 10 seconds.

8.4 IPX4

Caution:

- Always keep the charging port dry before connecting AC power.
- To ensure splash resistance, always keep the protective covers closed securely.

The speaker is IPX4 splash resistant.



9. SPECIFICATIONS

Product name:	PARTYBOX ON-THE-GO
AC power input:	100 - 240 V ~ 50/60 Hz
Built-in Battery:	18 Wh
Power consumption:	60 W
Total output power:	100 W RMS (AC powered) 50 W RMS (battery powered)
Standby power consumption:	< 2 W with Bluetooth connection; < 0.5 W without Bluetooth connection
USB output:	5 V $\overline{\text{---}}$ 2.1 A
Speaker drivers:	1 x 5.25 in (133 mm) woofers + 2 x 1.75 in (44 mm) tweeters
Signal-to-noise (S/N) ratio:	> 80 dBA
Frequency response:	50 Hz - 20 kHz
Battery charge time:	< 3.5 hrs
Battery play time:	> 6 hrs
Bluetooth version:	4.2
Bluetooth profile:	A2DP v1.3, AVRCP v1.6
Bluetooth transmitter frequency range:	2.4 - 2.48 GHz
Bluetooth maximum transmitter power:	10 dBm (EIRP)
Bluetooth transmitter modulation:	GFSK, $\pi/4$ DQPSK, 8DPSK
Bluetooth range:	Approx. 10 m (33 ft)
USB format:	FAT 16, FAT 32
USB file format:	.mp3, .wma, .wav
Digital input:	Bluetooth / USB -9 dBFS
Input sensitivity:	AUX in: 370 mV rms Microphone: 20 mV Guitar: 100 mV
Product Dimension (W x H x D):	490 x 245 x 228 mm / 19.3 x 9.6 x 9.0 in
Net weight:	7.5 kg / 16.5 lbs

Wireless microphone spec

Frequency response:	65 Hz - 15 kHz
Signal-to-noise (S/N) ratio:	> 60 dBA
UHF frequency band:	470 ~ 960 MHz (depends on SKU) (EU 657 ~ 662 MHz)
Transmitter transmitting power:	< 10 mW
Microphone battery play time:	< 10 hrs
Distance between transmitter and receiver:	< 10 m

10. TROUBLESHOOTING

Caution:



- Never try to repair the product by yourself. If you have any problems while using this product, check the following points before you request service.

System

The speaker will not turn on.

- Ensure that the speaker battery is not drained. If not, use the AC power instead.

No response from some buttons

- The product may be in demo mode. In demo mode, all the input sources and buttons except + / - / ▶ /  are disabled. Hold ▶ and  simultaneously for more than 5 seconds to exit demo mode.


Sound

No sound from the speaker.

- Ensure that the speaker is powered on.
- Adjust volume.
- Ensure that a sound source is active and not muted.

Bluetooth

A device cannot connect with the speaker.

- Ensure that the Bluetooth function of the device is enabled.
- The speaker is already connected with another Bluetooth device. Hold  on the speaker for more than 20 seconds to disconnect and pair with a new device.

Poor audio quality from a connected Bluetooth device

- The Bluetooth reception is poor. Move the device closer to the speaker, or remove any obstacle between the device and speaker.

Wireless microphone

No response from the microphone.

- Power on the microphone.
- Replace batteries if the battery level is low.
- Pair the microphone with the speaker manually (see [6.5.1 Connecting a Microphone](#)).

11. COMPLIANCE

The product is in compliance with the European Union energy legislation.

Bluetooth connection mode

The product is intended to be used for streaming music via Bluetooth connection. A consumer can stream Bluetooth audio to the speaker. When the product is connected through Bluetooth, the Bluetooth connection must remain active at all times to ensure proper operation.

The product will enter sleep mode (networked standby) after 20 minutes without operation. The power consumption in sleep mode is less than 2.0 Watts, after which it can be re-activated via Bluetooth connection.

Bluetooth disconnection mode

The product will enter standby mode after 20 minutes without operation. The power consumption in standby mode is less than 0.5 Watts.

12. TRADEMARK



The Bluetooth® word mark and logos are registered trademarks owned by Bluetooth SIG, Inc. and any use of such marks by HARMAN International Industries, Incorporated is under license. Other trademarks and trade names are those of their respective owners.



Este produto está homologado pela Anatel, de acordo com os procedimentos regulamentados para avaliação da conformidade de produtos para telecomunicações e atende aos requisitos técnicos aplicados.

Para maiores informações, consulte o site da Anatel – www.anatel.gov.br

Este equipamento não tem direito à proteção contra interferência prejudicial e não pode causar interferência em sistemas devidamente autorizados.

Торговая марка: JBL
Назначение товара: Активная акустическая система
Изготовитель: Харман Интернешнл Индастриз Инкорпорейтед, США, 06901 Коннектикут, г.Стэмфорд, Атлантик Стрит 400, офис 1500
Страна происхождения: Китай
Импортер в Россию: ООО "ХАРМАН РУС СиАйЭс", Россия, 127018, г.Москва, ул. Двинцев, д.12, к 1
Гарантийный период: 1 год
Информация о сервисных центрах: www.harman.com/ru тел. +7-800-700-0467
Срок службы: 5 лет

Товар сертифицирован



Дата производства: Дата изготовления устройства определяется по двум буквенным обозначениям из второй группы символов серийного номера изделия, следующих после разделительного знака «-». Кодировка соответствует порядку букв латинского алфавита, начиная с января 2010 года: 000000-MY0000000, где «M» - месяц производства (A - январь, B - февраль, C - март и т.д.) и «Y» - год производства (A - 2010, B - 2011, C - 2012 и т.д.).

Используйте устройство только по прямому назначению в соответствии с предоставленной инструкцией. Не пытайтесь самостоятельно вскрывать корпус товара и осуществлять ремонт. В случае обнаружения недостатков или дефектов, обращайтесь за гарантийным обслуживанием в соответствии с информацией из гарантийного талона. Особые условия хранения, реализации и (или) транспортировки не предусмотрены. Избегайте воздействия экстремальных температур, длительного воздействия влаги, сильных магнитных полей. Устройство предназначено для работы в жилых зонах. Срок годности не ограничен при соблюдении условий хранения. Пожалуйста, не утилизируйте устройства с литий-ионными аккумуляторами вместе с бытовыми отходами.



HARMAN International Industries,
Incorporated 8500 Balboa
Boulevard, Northridge, CA 91329
USA
www.jbl.com

© 2020 HARMAN International Industries, Incorporated. All rights reserved. JBL is a trademark of HARMAN International Industries, Incorporated, registered in the United States and/or other countries. Features, specifications and appearance are subject to change without notice.