

## Highlights:

---

- Innovative & unique design
- 8" high-performance woofer
- 100 Watt RMS power
- Countless mounting possibilities
- High grade aluminum construction
- Modern and elegant design
- Wall mounted bracket included

## Product information:

---

The NOBA8 is a compact 8" bass cabinet which is characterized by an innovative & unique design. With its curved shape, made of 4 mm thick aircraft graded aluminum and its extremely powerful 8" woofer of 200 Watts, the NOBA8 is able to deliver an unheard low frequency response for its small woofer size. The perfect acoustic experience is guaranteed when the entire audio frequency spectrum is equally distributed.

The slick look of the NOBA8 allows it to be placed against a wall, on the ceiling or even underneath furniture, yet due to the unique composition of its parts, NOBA8 ensures a much better spreading of sound waves than other similar cabinets. It is loaded with a 8" high-performance woofer constructed with a Max power handling of 200 Watt, with an RMS rating of 100 Watt. The strength of this loudspeaker originates from a 2.4" voice coil which is allowed to extra long excursions, combined with a large magnet size. Displacements are precisely controlled by the low-loss suspension resulting in a superior linear behaviour.

The input connection is made using a terminal block connector located at the inner side of the supporting structure, allowing close placement to any wall or corner. An included wall mounting bracket offers convenient mounting possibilities to any wall, while fixation to ceilings is possible through optionally available accessories.

## Applications:

---

- Sporting facilities
- Bars & Restaurants
- Retail
- Education
- Residential
- Corporate



## System specifications:

Speaker type		8" Bass reflex cabinet
Impedance		8 $\Omega$
Peak power handling		400 W
Program power handling		200 W
RMS/AES power handling		100 W
Sensitivity (1W/1m)		83 dB
Sound Pressure (Max. W/1m)		108 dB
Frequency	Response ( $\pm$ 3 dB)	90 Hz - 350 Hz
	Range (-10 dB)	45 Hz - 350 Hz
Drivers		8" ferrite with 2.4" voice coil
Connectors		2-pin Euro Terminal Block (Pitch - 5.08 mm)

## Product Features:

Dimensions		558 x 383 x 149 mm (W x H x D)
Weight		8.75 kg
Construction		Aluminium with plastic side covers
Mounting & handling		Mounting wall bracket
Colours		Black (RAL9004) (NOBA8/B)
		White (RAL9003) (NOBA8/W)
Accessories	Included	Wall mounting bracket
	Optional	MBK410C Ceiling mount bracket

## Variants:

- NOBA8/B - Black
- NOBA8/W - White

## Shipping & Ordering:

Packaging	Cardboard box
Shipping weight & volume	11.5 kg - 0.06 Cbm

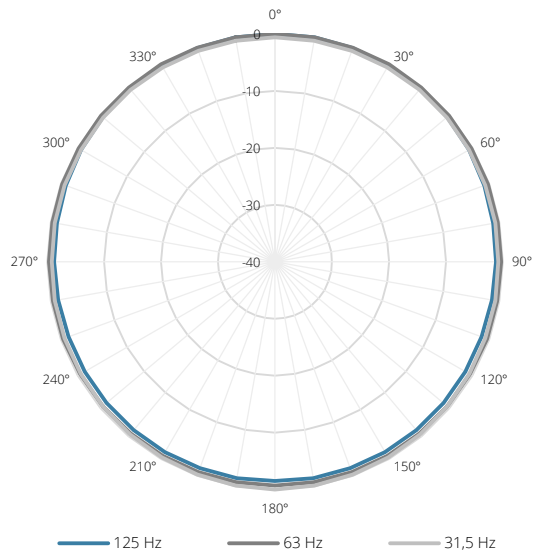
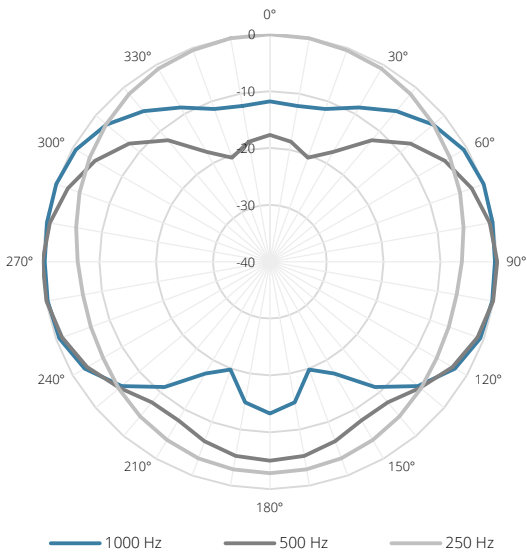
## Architects' and Engineers' Specifications:

---

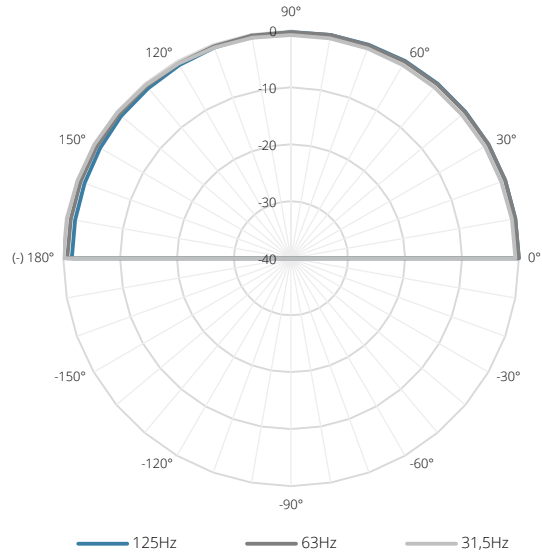
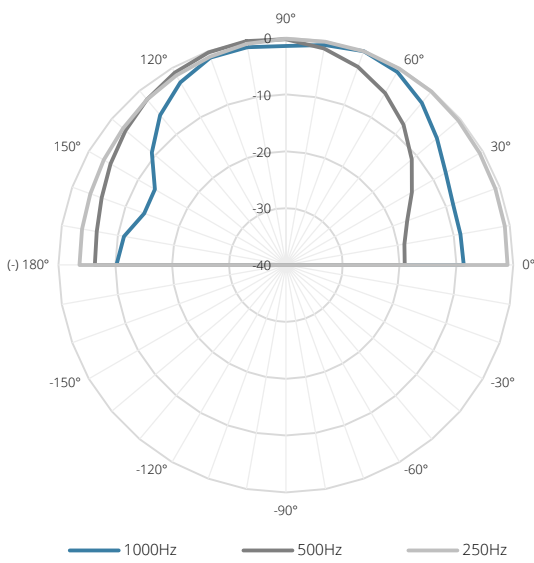
The bass cabinet shall be a compact model characterized by an innovative and unique design. The construction shall be a bass reflex type incorporating a 8" transducer with 2.4" voice coil and powerful ferrite type magnet. It shall have a power handling of 200 Watt, with a frequency response (-10 dB) ranging from 45 Hz to 350 Hz. The sensitivity shall be 83 dB when measuring with an input signal of 1 Watt at a distance of 1 meter, while the maximum continuous sound pressure level shall reach 108 dB. The construction shall be made using 4 mm thick aluminum with plastic side covers and grilles, which are finished with a structured coating which comes available in both black (RAL9004) & white (RAL9003) color. Input connections shall be implemented using 2-pin Euro Terminal Block (Pitch - 5.08 mm). The enclosure shall be 558 mm wide, 383 mm high and 149 mm deep and the weight shall not exceed 9.75 Kg. The system shall come delivered with an included wall mounting bracket, while a ceiling mounting bracket shall be optionally available.

# Acoustical data graphs:

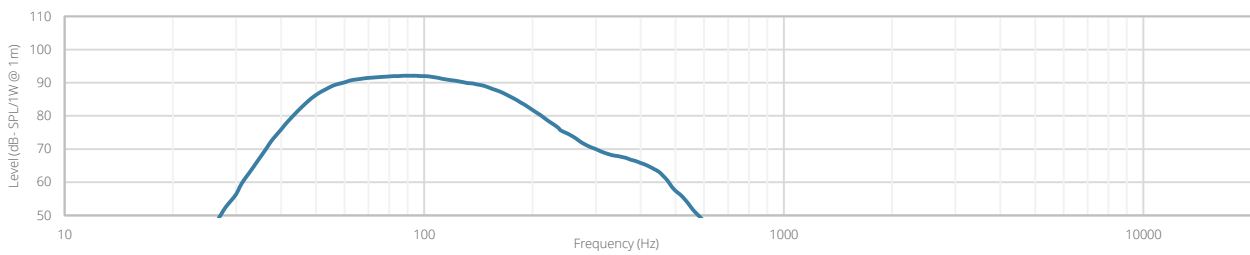
## Horizontal Polars:

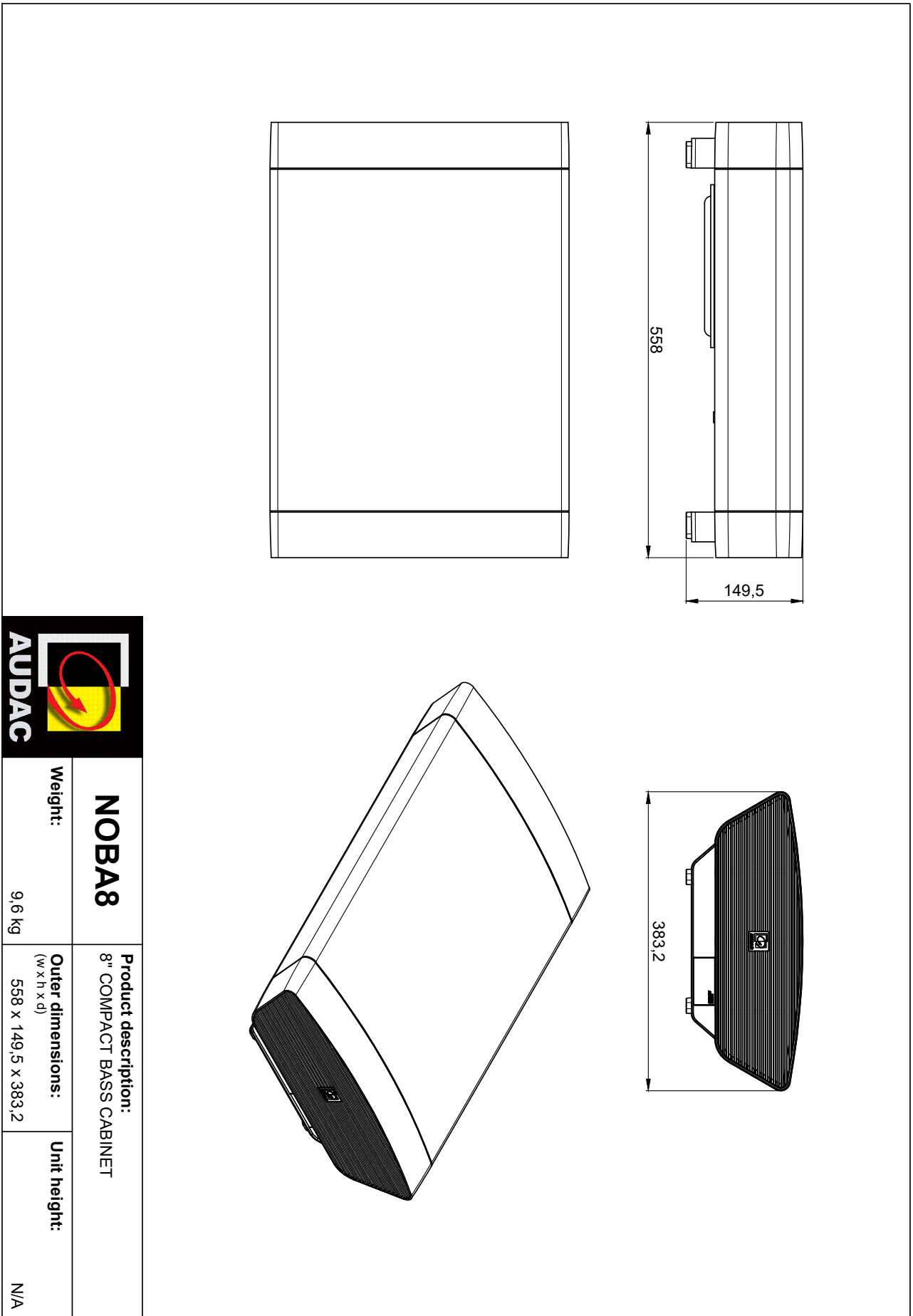


## Vertical Polars:



## Sensitivity:





<b>NOBA8</b>		<b>Product description:</b> 8" COMPACT BASS CABINET	
<b>Weight:</b>	9,6 kg	<b>Outer dimensions:</b> (w x h x d)	558 x 149,5 x 383,2
		<b>Unit height:</b>	N/A