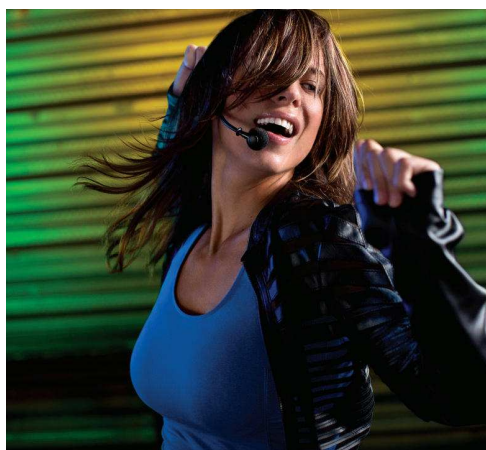


BLX Wireless

Legendary sound, right out of the box.

For performers who wish to unplug from the wire, BLX Wireless Systems feature trusted Shure microphones and world-class design and construction. Available in bodypack and handheld configurations, BLX Wireless Systems built for legendary sound, right out of the box.



APPLICATIONS

Musicians (Vocal, Guitar, Brass or Woodwinds)

Presenters (Speech, Aerobics)

Karaoke

PRODUCT HIGHLIGHTS

Easy set up and operation

One-touch Quickscan frequency selection quickly locates the best open frequency

Legendary Shure audio and durable construction

System Specifications

Working Range	91 m (300 ft) Line of Sight Note: Actual range depends on RF signal absorption, reflection and interference.
Audio Frequency Response	50 to 15,000 Hz Note: Dependent on microphone type
Total Harmonic Distortion Ref. ± 33 kHz deviation with 1 kHz tone	0.5%, typical
Dynamic Range	100 dB, A-weighted, typical
Operating Temperature	-18°C (0°F) to 57°C (135°F) Note: Battery characteristics may limit this range.
Polarity	Positive pressure on microphone diaphragm (or positive voltage applied to tip of WA302 phone plug) produces positive voltage on pin 2 (with respect to pin 3 of lowimpedance output) and the tip of the high impedance 1/4-inch output.
NOTE: All Specifications are subject to change. Performance may vary depending on country regulations and operating environment.	

Component Specifications

BLX1 Bodypack Transmitter



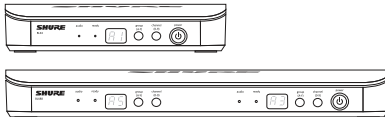
Audio Input Level	gain	max: -16 dBV maximum min (0 dB): +10 dBV maximum
Gain Adjustment Range	26 dB	
Input Impedance	1 M Ω	
RF Transmitter Output	10 mW, typical	varies by region
Dimensions	110 mm x 64 mm x 21 mm (H x W x D)	
Weight	75 g (2.6 oz.), without batteries	
Housing	Molded ABS	
Power Requirements	2 LR6 AA batteries, 1.5 V, alkaline	
Battery Life	up to 14 hours (alkaline)	

BLX2 Handheld Transmitter



Audio Input Level	gain	0dB: -20 dBV maximum -10dB: -10 dBV maximum
Gain Adjustment Range	10 dB	
RF Transmitter Output	10 mW, typical	varies by region
Dimensions	224 mm X 53 mm dia. (8 7/8 X 2 1/8 in.)	
Weight	218 g (7.7 oz.) (without batteries)	
Housing	Molded ABS	
Power Requirements	2 LR6 AA batteries, 1.5 V, alkaline	
Battery Life	up to 14 hours (alkaline)	

BLX4 Wireless Receiver & BLX88 Dual Wireless Receiver



Output Impedance	XLR connector: 200 Ω 6.35 mm (1/4") connector: 50 Ω
Audio Output Level Ref. ± 33 kHz deviation with 1 kHz tone	XLR connector: -27 dBV (into 100 k Ω load) 6.35 mm (1/4") connector: -13 dBV (into 100 k Ω load)
RF Sensitivity	-105 dBm for 12 dB SINAD, typical
Image Rejection	>50 dB, typical
Dimensions	BLX4: 40 mm X 188 mm X 103 mm (H x W x D) BLX88: 40 mm X 388 mm X 116 mm (H x W x D)
Weight	BLX4: 241 g (8.5 oz.) BLX88: 429 g (15.1 oz.)
Housing	Molded ABS
Power Requirements	12-15 V DC @ 160 mA (BLX88, 320 mA), supplied by external power supply (tip positive)

BLX4R Wireless Receiver



Output Impedance	XLR connector: 200 Ω 6.35 mm (1/4") connector: 50 Ω
Audio Output Level Ref. ± 33 kHz deviation with 1 kHz tone	XLR connector: -20.5 dBV (into 100 k Ω load) 6.35 mm (1/4") connector: -13 dBV (into 100 k Ω load)
RF Sensitivity	-105 dBm for 12 dB SINAD, typical
Image Rejection	>50 dB, typical
Dimensions	50 mm X 198 mm X 163 mm H x W x D
Weight	998 g (2.2 lb.) without antennas
Housing	Molded ABS, steel
Power Requirements	12-15 V DC @ 260 mA, supplied by external power supply (tip positive)

