

iD4 | 2in | 2out Audio Interface

Manual v1.3

AUDIANT

Welcome to your new Audient iD4 Audio Interface

To help get you started please visit
audient.com/products/iD4
to download the latest software
and firmware.

Inside the box:

- iD4
- USB-C to USB-C cable
- Printed Quick Start Guide

Features include:

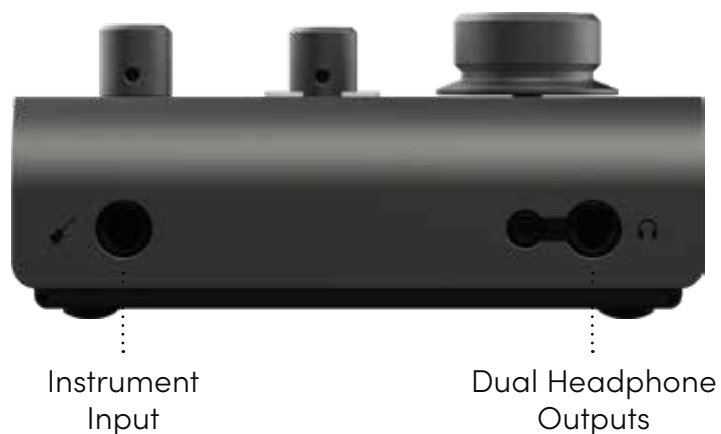
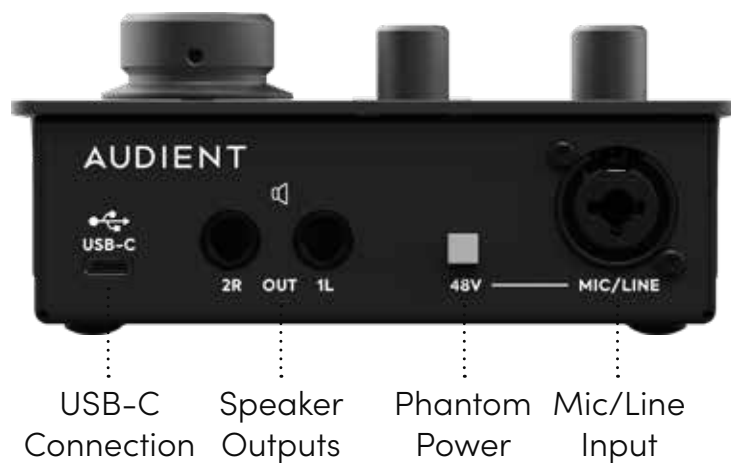
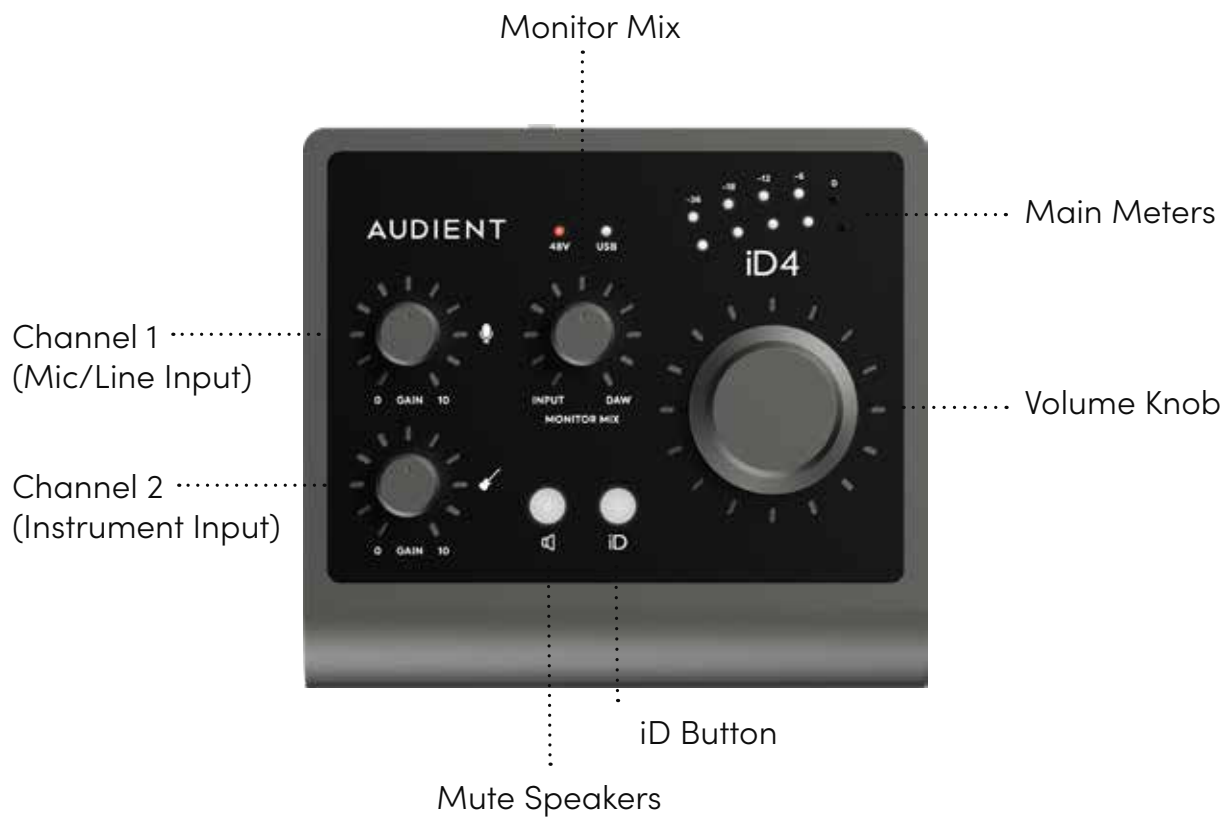
- 1 x Audient Console Mic Pre
- Class Leading Converters
- 1 x JFET Instrument Input
- 2 x Line Outputs
- Dual Headphone Outputs
- Scrollcontrol
- Speaker on/off Button
- Monitor Mix and Pan
- True Phantom Power over USB
- USB3.0 Bus Powered
- iOS Compatible
- 24bit/96khz
- All Metal Design
- Free Software + Plugins



Contents

iD4 Overview	4	General Operation:	21
Safety Information	5	Sample Rate	22
Declaration of Conformities	7	Buffer Size & Latency	22
	8	Operation on macOS	23
Mac Installation	9	Operation on iOS	23
Windows Installation	10	Operation on Windows	23
iOS Installation	12	Audio Loop-back	24
Product Registration	13		
Firmware Update	14	Daw Setups:	26
Hardware Features:	15	Logic Pro Setup	27
Microphone & Line Input	16	Pro Tools Setup	28
Instrument Input	17	Cubase/Nuendo Setup	29
Loudspeaker Outputs	17	Ableton Setup	30
Headphone Outputs	17	Troubleshooting & FAQ	31
Monitor Control	18	Specifications	33
Volume Encoder	18	Dimensions	34
Monitor Mix	18	Warranty & Contact	35
Monitor Pan	19	Service	36
MUTE Speakers	19	Glossary	37
iD Button	20		
Metering	20		
Status LED	20		
Kensington Lock	20		

iD4 Overview



Safety Information

Important Safety Instructions

Please read all of these instructions and save them for later reference before connecting the USB cable and powering up iD4.

iD4 itself does not operate with any high voltage mains supply inside the unit but appropriate safety measures should still be adhered to prevent electrical shock and fire hazards. In the event of a unit failure, do not attempt to open the iD4 yourself. Please contact Audient support so that a suitable method of repair or replacement can be recommended.

support.audient.com

Consult a qualified technician if you suspect difficulties. Do not attempt to tamper with the unit whilst connected or disconnected – **HAZARDOUS TO HEALTH**

WARNING!

To reduce risk of fire or electrical shock,
DO NOT expose this apparatus to rain
or moisture.

No user serviceable parts inside.
Please refer servicing to qualified
service personnel.

Safety Information

Important Safety Instructions

1. Read these instructions
2. Keep these instructions
3. Heed all warnings
4. Follow all instructions
5. Do not use this equipment near water
6. Clean only with dry cloth
7. Do not install near any heat sources such as radiators, heat registers, stoves, or other equipment (including amplifiers) that produce heat
8. Protect cables from being walked on or pinched particularly at convenience receptacles, and the point where they exit from the equipment
9. Only use attachments/accessories specified by the manufacturer
10. Switch off your computer and unplug this equipment during lightning storms or when unused for long periods of time
11. Refer all servicing to qualified service personnel. Servicing is required when the equipment has been damaged in any way, liquid has been spilled or objects have fallen into the equipment, the equipment has been exposed to rain or moisture, does not operate normally, or has been dropped
12. The equipment should not be exposed to dripping or splashing and no objects filled with liquids (such as vases) should be placed on the equipment

Declaration of Conformities

FCC Part 15B

This apparatus has been tested and found to comply with the limits of a class-A digital device, pursuant to Part 15B of the FCC Rules. These limits are designed to provide reasonable protection against harmful interference in a residential installation. This equipment generates, uses and can radiate radio frequency energy and, if not installed and used in accordance with the instructions, may cause harmful interference to radio communications. If this equipment does cause harmful interference to radio or television reception, which can be determined by turning the equipment off and on, the user is encouraged to try to correct the interference by one or more of the following measures:

1. Re-orient or relocate the receiving antenna
2. Increase the separation between the equipment and receiver
3. Connect the equipment into an outlet on a different circuit from that to which the receiver is connected
4. Consult the dealer or an experienced radio/TV technician for help



We, Audient Ltd, Aspect House, Herriard, Hampshire, RG25 2PN, UK, 01256 381944, declare under our sole responsibility that the product iD4 complies with Part 15 of FCC Rules.

Operation is subject to the following two conditions:

1. This device may not cause harmful interference,
2. This device must accept any interference received, including interference that may cause undesired operation



We, Audient Ltd, declare that the product, the iD4, to which this declaration relates, is in material conformity with the appropriate CE standards and directives for an audio product designed for consumer use.



Audient Ltd has conformed where applicable, to the European Union's Directive 2002/95/EC on Restrictions of Hazardous Substances (RoHS) as well as the following sections of California law which refer to RoHS, namely sections 25214.10, 25214.10.2, and 58012, Health and Safety Code; Section 42475.2, Public Resources

Installation

Mac Installation

System Requirements

macOS 10.11.6 (El Capitan) or later
Mac: Intel or Apple Silicon CPU,
1GB RAM Minimum

1. Connect iD4

Using the USB - C cable provided, connect iD4 to a USB - C port on your Mac.

2. Check Connectivity

Once connected to your computer and powered on, the white USB LED on iD4 will illuminate.

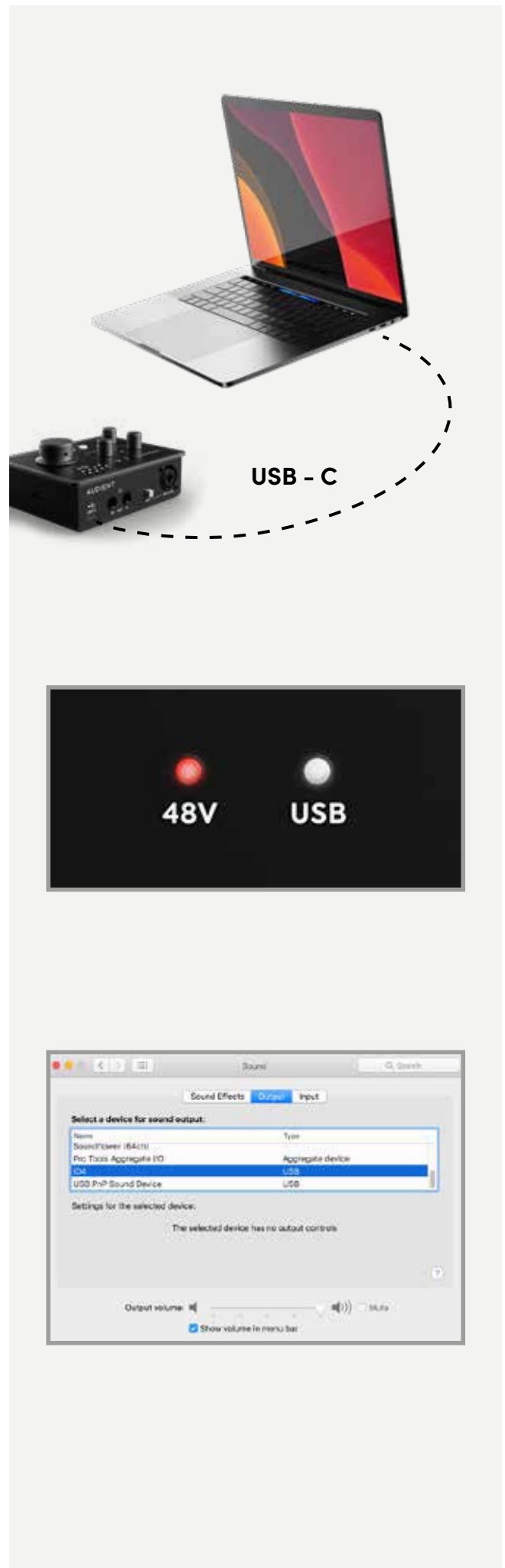
If at any time the USB LED turns off during normal operation please check all connections and if further problems develop please contact **Audient support**.

3. Set iD4 as Audio Device

Select iD4 in the audio device list found in:

System Preferences > Sound > Output

You will need to check that iD4 is selected as the audio device in your chosen Digital Audio Workstation Software (DAW) as well. This setting is normally found in an Audio Settings or Preferences menu. See **pages 18 - 22** for information on setting up iD4 with some common DAWs.



Windows Installation

Windows System Requirements:

- Windows 10 or later (32 or 64 bit)
- Intel Core 2 @ 1.6 GHz, or AMD equivalent
- 1 GB RAM Minimum

1. Download the iD Drivers

Head to our website for the latest version of our iD Windows Installer:

audient.com/id4-downloads

2. Connect iD4

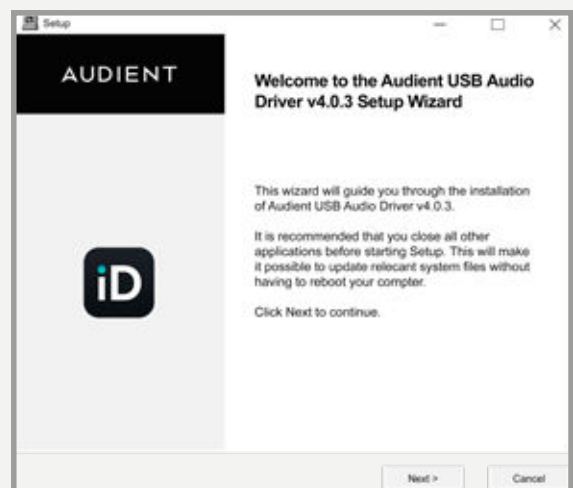
Using the USB cable provided, connect iD4 to your computer's USB port.

3. Run iD Driver Setup

Double click on the installer to run the iD installation and follow the onscreen instructions.

4. Reboot PC

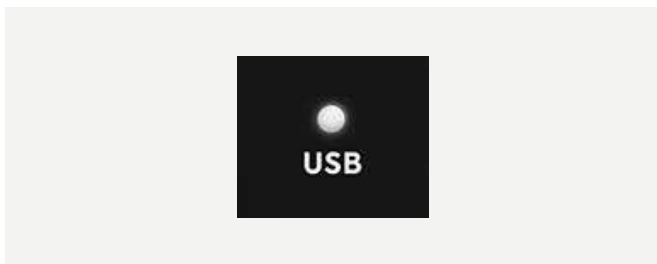
Reboot your PC to make sure that all the drivers have been applied.



Windows Installation

5. Check Connectivity

Once connected to your computer and powered on, the White USB LED on iD4 will illuminate.



If at any time the USB LED turns off during normal operation please check all connections and if further problems develop, please contact **Audient Support**.

6. Set iD4 as Audio Device

To set iD4 as your PC's default audio device, select the "Set Default" option for iD4 in the window at:

PC Settings > Control Panel > Hardware and Sound > Sound

(On Windows 10 - search for Sound)

You will need to check that iD4 is selected as the audio device in your chosen DAW as well. This setting is normally found in an Audio Settings or Preferences menu.

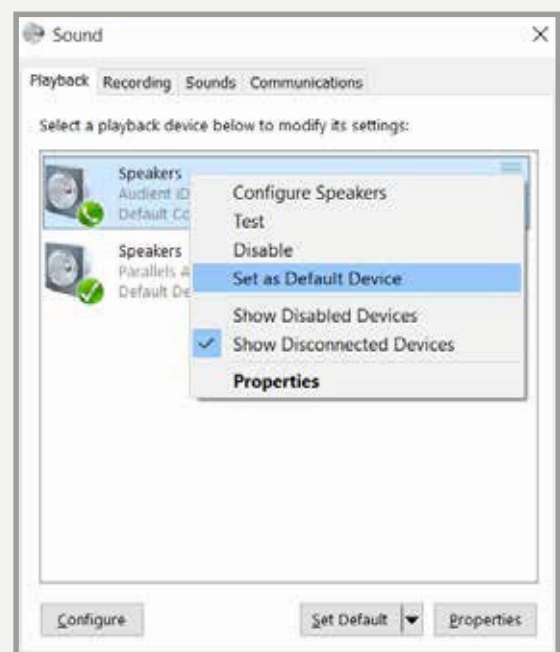
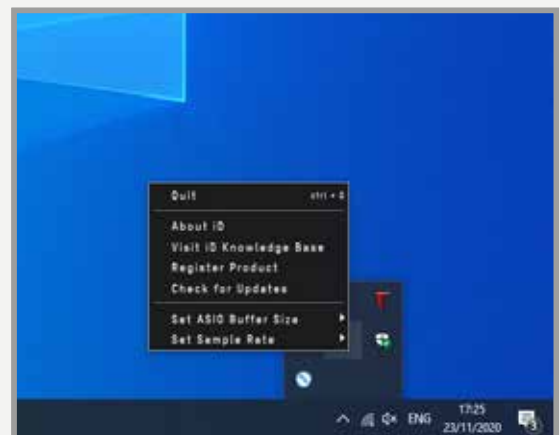
See **pages 24 - 28** for information on setting up iD4 with some common DAWs.

iD Icon



Once the iD app is installed, the iD icon will be visible in the Windows System Tray (it may be in the hidden icons area). Right click the iD icon to change the sample rate, buffer size and check for firmware updates.

See **page 22** for explanations of the settings).



iOS Installation

iOS System Requirements:

iD4 can be used on iOS or iPadOS devices that have lightning ports or USB-C ports providing the device is using iOS 6 or later.

No drivers are required for iOS or iPadOS operation.

Devices with a Lightning Port

To Connect the iD4 to an iOS device with a lightning port, an Apple Camera Connection Kit and Active USB hub must be used.

Plug the USB hub into the USB port on the Camera Adapter kit, and connect the kit to your iOS device (to charge the iOS device, you can plug a charging cable into a port on the USB hub and camera kit as well).

Now Connect the iD4 to one of the USB ports on the Active USB hub.

Device with USB-C Port

The iD4 can simply be connected directly and the iOS device with a USB-C port using a USB-C to USB C cable.

The USB-C port will provide the correct voltage for the iD4 to function fully.

1. Connect iD4 to hub

Using the USB cable provided, connect iD4 to a USB port on the powered USB hub.

2. Connect to iOS Device

Plug the USB hub into the USB port on the Camera Adapter kit, and connect the kit to your iOS device (to charge the iOS device, you can plug a charging cable into a port on the USB hub and camera kit as well).

3. Check Connectivity

Once connected to your iOS device, and powered on, the white USB LED on iD4 will illuminate.

Registration & Firmware Update

Registration

Compatible with all major audio software, iD4 comes bundled with a collection of professional software and services, giving you everything you need to start recording.

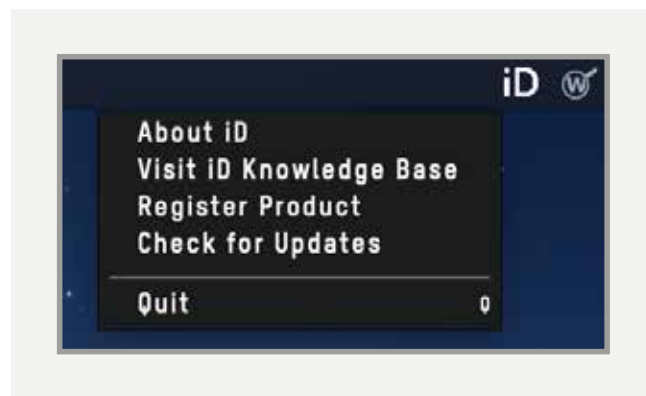
audient.com/ARC

Go to the link above and select register your product, then enter your details to create an account. You will then receive a verification email to your inbox – double check your spam and junk folders if you cannot see this.

Once you've verified your account, register your iD4 by entering the serial number and the unique 4 digit PIN found on the underside of the iD4. Once you have registered the product, you can now select from a wide array of offers and promotions, giving you easy access to powerful creative tools straight away.

Firmware Update

Once firmware updates are made available, they need to be applied to iD4. This is done through the iD app.

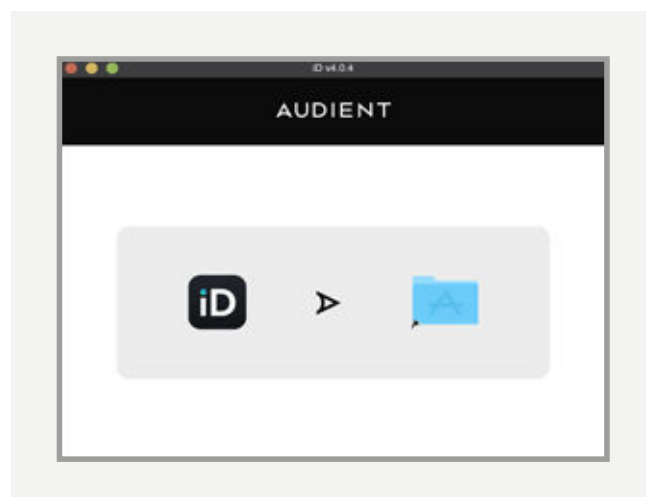


macOS

iD4 is class compliant, which means that no drivers are needed for operation. However to update the firmware, download the iD app from our website at:

audient.com/id4-downloads

Drag the app into your applications folder and open it. If there is a firmware update available, you will be prompted to install it. You do not need to have the iD app running on Mac for regular operation of iD4.



Registration & Firmware Update

Windows

For regular Windows operation, the iD app must be running, therefore when a firmware update is available you will be notified. To check manually, right click on the iD icon in the system tray and select 'Check for Updates'.

iOS

A firmware update is not possible on the iOS platform, so you will need to plug iD4 into a Mac or Windows computer and update the firmware from there.

Offline Computers

If your computer is not connected to the internet then please contact the Audient Support team who will be able to advise you on how to update your firmware offline.

support@audient.com

Hardware Features

Microphone Preamplifier & Line Input

iD4 features an Audient Console microphone preamplifier. This preamp is based on designs from Audient's classic consoles and are the same that are used across our entire product range.

The design features discrete, Class-A circuitry providing exceedingly low distortion and noise performance. From a sonic point of view, iD4 is fast, open and detailed.

- Amphenol™ XLR/TRS Jack combi-connectors provide microphone and line inputs in one compact connector.

When using a condenser microphone you will need to use phantom power otherwise you will not get any signal. To activate phantom power, press the +48V switch next to the input connector. The +48V phantom power indicator LED will illuminate red when phantom power is activated.



The microphone preamplifiers feature:

- 58 dB of clean gain
- 48v ($\pm 4V$) phantom power rated at 10mA
- > 2.8k Ω input impedance which provides a punchy tone from any microphone type



Instrument Input

iD4 uses a discrete Class-A JFET instrument (D.I) input on channel 2, which is easily accessible at the front of the unit.

The D.I input is perfect for plugging in electric or electro-acoustic guitars, as well as basses and even synthesisers. The JFET circuitry adds a tiny bit of colour and distortion to the signal, giving your instruments a bit of added warmth.



Loudspeaker Outputs

iD4 has stereo speaker outputs on the back panel in the form of balanced TRS jack connectors. The outputs are fed from high quality Digital to Analogue Convertors (DACs), sending clean, detailed audio to your speakers.



Headphone Outputs

iD4 features a high current headphone amplifier. This can be accessed using both the 3.5mm and 6.35mm sockets found on the front of the unit. The same audio signal comes out of both connectors simultaneously, so it does not matter which you plug your headphones into. You can also plug in two pairs at the same time.

Headphones can be used instead of, or alongside speakers to get an idea how your mix sounds on headphones, or to provide an artist headphone mix.

Monitor Control

Volume Encoder

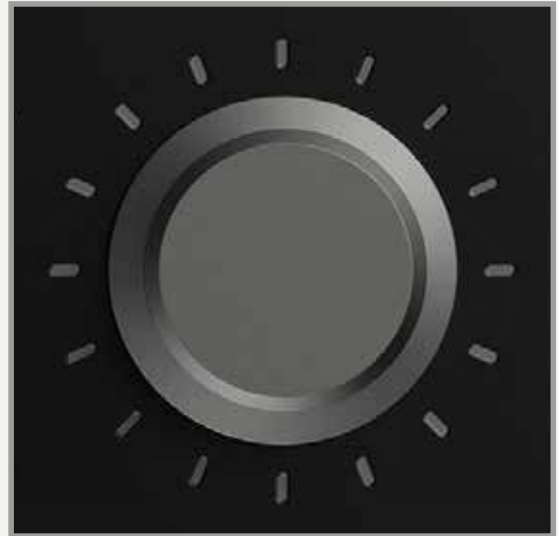
The Volume encoder allows you to change the volume of the audio for both the speaker and headphone outputs. Pressing the encoder will dim the audio, dropping the level by 15 dB, useful if you want to quickly turn down the level to your speakers/headphones without losing your listening level. As you adjust the volume level, the main meters will change to show the level you are setting it to, before changing back to show the output level.

Monitor Mix

The Monitor Mix knob lets you monitor the mic and D.I inputs, while still being able to hear the audio coming from your computer (DAW) at very low latency to avoid distracting delays.

While mixing in your live input, it is important to turn off monitoring in your Digital Audio Workstation (DAW), otherwise you will end up hearing an extra copy of the signal.

If you rotate the Monitor Mix dial all the way to INPUT, it allows you to monitor the true input Levels. The Mic/Line input will appear on the top meter, and the D.I on the bottom meter.



Note

Listening on speakers while monitoring your input from a microphone in the same room can cause feedback, which not only is unpleasant, but could also potentially damage your speakers. Ensure that either the speakers are muted, or that the monitor mix is set all the way to DAW when not using the microphone.

Monitor Pan

iD4's Monitor Pan feature enables you to pan both the mic pre and DI input from left to right, making it easy to create a balanced headphone mix that suits you. Press and hold the Mute and iD buttons whilst turning the Volume Encoder to pan the inputs.

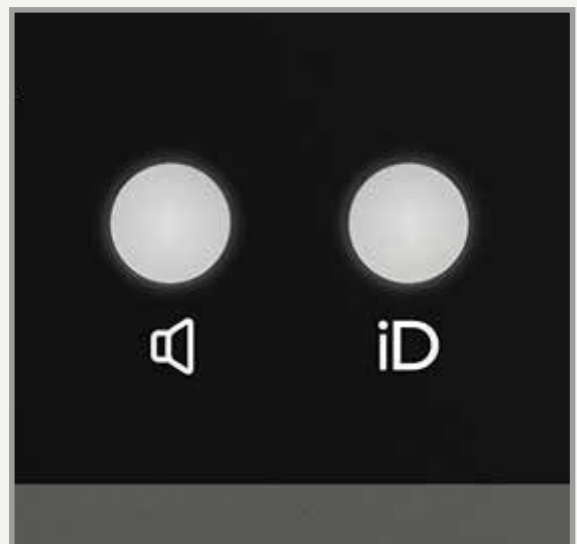
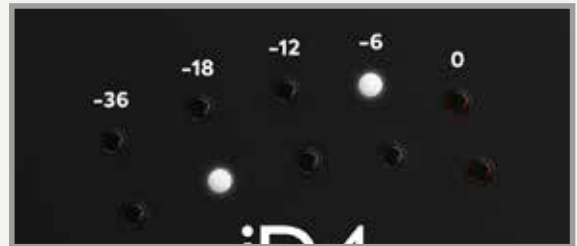
Twisting clockwise pans channel 1 left and channel 2 right, while twisting anti-clockwise pans channel 1 right and channel 2 left. Pressing the encoder whilst holding the Mute and iD button will reset the pan.

As you adjust monitor pan, the meters show the pan positions of the mic and D.I, where the top meter shows the Mic/Line Input, and the bottom meter shows the D.I Input.

MUTE Speakers Button

The MUTE Speakers button is a quick way of muting the speaker outputs whilst allowing audio to pass to the headphone outputs, allowing you to hear what you are playing while you are recording.

If you are using a microphone in the same room as your speakers, then it is important to mute your speakers while recording to prevent unwanted audio being picked up by the mic or getting feedback.



iD Button

Pressing the iD button will activate **ScrollControl**, which allows the encoder to be used as a virtual scroll wheel for your computer. This works well for compatible plugin parameters and adding automation in a more hands on way.

iD *ScrollControl*

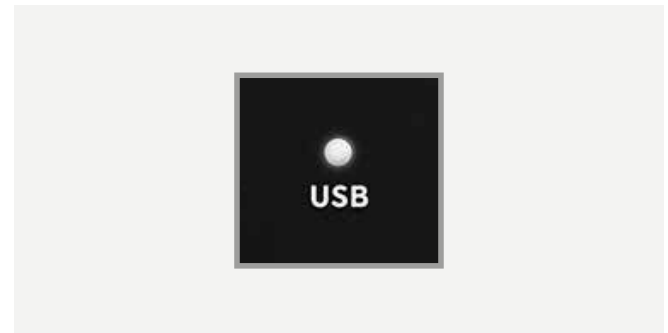
To use **ScrollControl**, hover your mouse over whatever you want to control and rotate the encoder. If you find it is too sensitive or not sensitive enough, you can try adjusting your computer scrolling speed found in your computer settings.

ScrollControl may act slightly differently on certain plugins or DAWs depending on how they have been programmed to work with mouse wheel scrolling. You may find some controls/software do not support **ScrollControl**.

Metering

As mentioned in previous sections, the meters change to display positions and values for different settings on iD4, however when not adjusting any settings, it will display the peak output level.

Status LED



The white USB LED indicates connection via USB to your device. A solidly lit light means that there is stable communication between iD4 and the device.

Kensington Lock

For those who work in educational establishments or in situations where your equipment is public facing and subject to possible theft opportunities, we have provided a Kensington lock hole to enable you to protect your iD4.

A desk mounting plate is also available, please contact Audient for more information.



General Operation

This next section will give some insight on how to get the most out of iD4, and some of the different settings and options you have available to you when using it.

Sample Rate

When starting a new project, it is important to consider the sample rate you are using. The sample rate dictates how many times a second the level of the incoming audio is measured (sampled), which allows continuous analogue audio to be represented digitally as a series of 0s and 1s.

44.1kHz is the standard sample rate for all CDs and most downloadable music, while 48kHz is the standard for people working with film. Higher sample rates can have their benefits but it is worth noting that as you increase the sample rate, you increase the file size of the audio and CPU resources required.

Buffer Size and Latency

Buffer size is a very important setting that will ensure that your projects are running smoothly and efficiently. A wrongly selected buffer size can result in hearing pops, clicks and stuttering audio. Buffer size dictates how many “samples” of audio are stored before being sent to the output.

A buffer adds a delay to the signal (known as latency), however it is essential for giving the computer some time to do other processing.

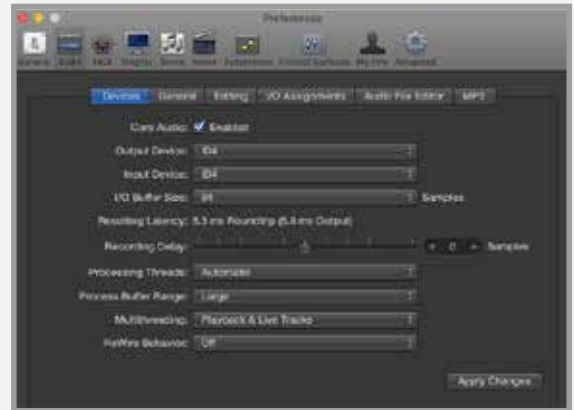
If you are monitoring iD4’s inputs directly using the Monitor Mix knob, you can keep the buffer size relatively high to reduce the strain on your computer. If you are wanting to monitor through your DAW with effects, for example being able to hear your electric guitar with an amp simulator on it, you will want the lowest buffer size your computer can handle. The buffer size you can get down to before you get audio issues is hugely dependant on your computer power, as well as the processing requirements of your session. Some DAWs allow you to “Freeze” tracks which reduces the CPU load, allowing you to choose lower buffer sizes.

For mixing, you can set the buffer size much higher, to allow your computer to process the audio in time. Increasing the latency does not really matter in this situation because you aren’t trying to do anything live. For larger sessions, you might find that you need a larger buffer size than normal.

You may need to adjust buffer sizes when working at different sample rates to account for the difference in CPU requirements of different sample rates.

macOS

The buffer size is selected from within your DAW, most likely in an audio settings or preferences menu.



* Setting buffer size on macOS in Logic Pro X

iOS

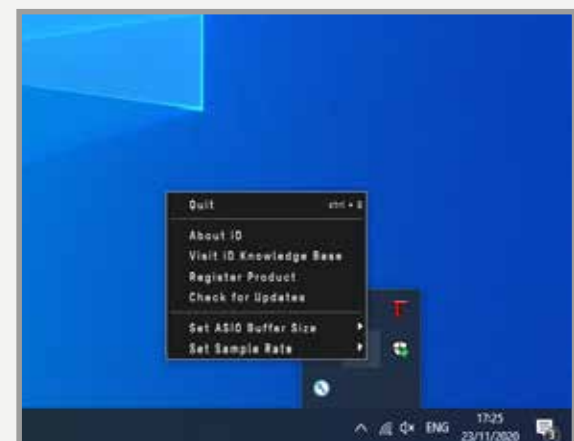
The location of the buffer size setting (or having a setting at all) is dependant on the app that you are using. Generally it will be found in the app's preferences/settings menu, or alternatively by finding the app, in the iOS settings app.



* Setting buffer size on iOS in Auria Pro

Windows

On Windows, the buffer size needs to be selected in the iD app before the DAW. A buffer size of 32 samples to 4096 samples can be selected.



Audio Loop-back

In order to allow you to loop audio from one application to another, iD4's software includes the Audio Loop-back Mixer.



This enables you to blend from both the Mic and DI Inputs as well as the playback of your computer all into a summed signal stereo feed by pulling up faders of the various channels to create a mix. This stereo feed/mix can then be recorded or streamed. The channels are as follows:

Mic 1 - The signal from the Mic input on the rear of the iD4

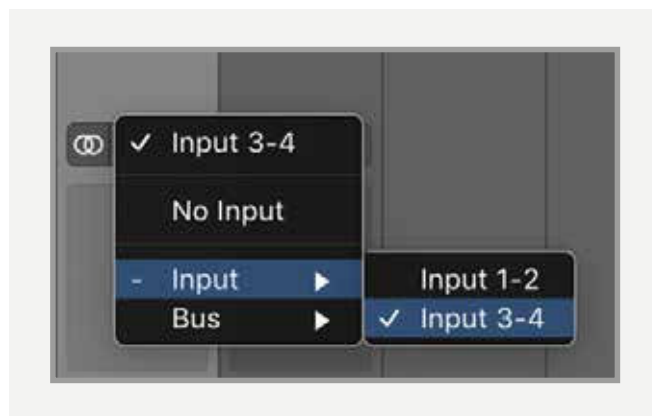
Mic 2 - The signal from the DI on the front of the iD4.

Main Output 1/2 - The Audio that is currently playing back through the headphone and speaker outputs. This would be the audio being sent to outputs 1+2 in your DAW.

Loop-back 1/2 - The dedicated loop-back outputs of the iD4, which enables you to loop audio without affecting your playback. This would be the audio being sent to outputs 3+4 in your DAW.

Using the Audio Loop-back Mix

To record or stream your loop-back mix, simply select either Input 3+4 or Loop-back 1+2 in your audio software. The input name you will see is dependent on your DAW or audio software.



If you're unsure how to do this in your software, review the documentation for your software for more details, but it'll typically be in the preferences panel.

Sending Audio to the Loop-back Outputs

Most DAW's and audio software will allow you to select your audio output as part of the audio preferences or in a mixer.

Again, for details on how to do this, check the manual or documentation for your software.

However, for applications that don't give you this option you can simply adjust the system settings.

MacOS

To adjust your output channels, you'll need to go to the Audio MIDI setup utility. This can be found by going to:

Finder > Applications > Utilities > Audio MIDI Setup

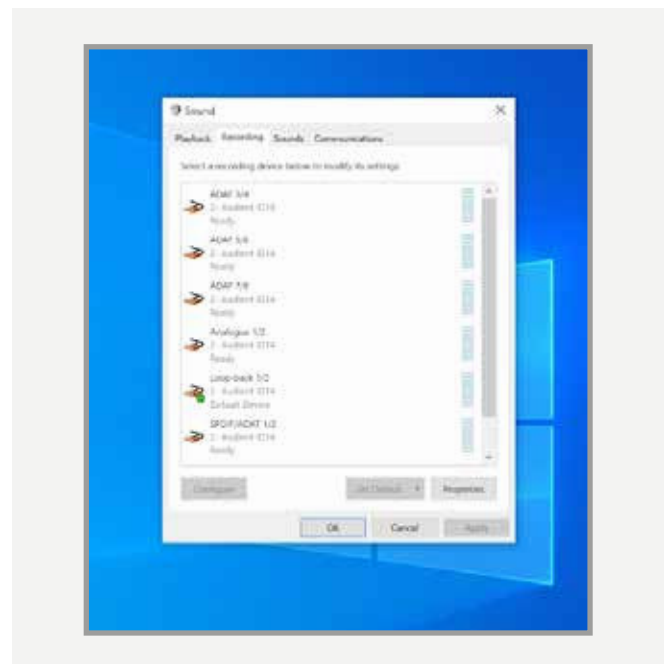
You should now see a list of audio devices currently connected to the Mac. Select the iD4, go to the 'Output' panel and click "Configure Speakers". Now set the Outputs to Loop-back 1 and Loop-back 2.



Click 'Apply'. Now all audio will be sent to the Loop-back channels instead of the Main Outputs and will therefore be ready to be sent to any other applications.

Windows

On Windows you can simply change your output channel by going to the 'Sound' settings found in the 'Control Panel'. Go to the 'Playback' device list and select 'Loop-back 1+2' as your Output Device.



DAW Setup

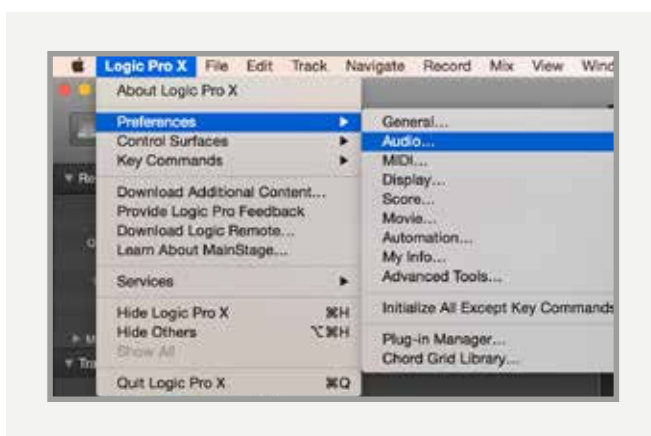


Logic Pro Setup

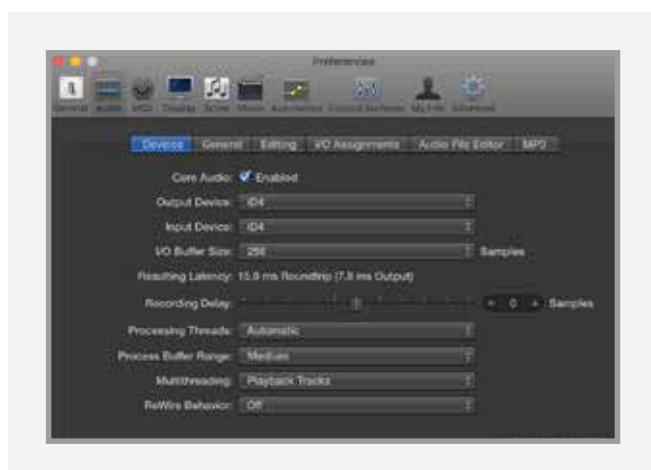
Operation with Logic Pro

With iD4 plugged into your Mac, launch Logic Pro and ensure that iD4 is selected as your Input and Output Device:

Logic Pro > Preferences > Audio

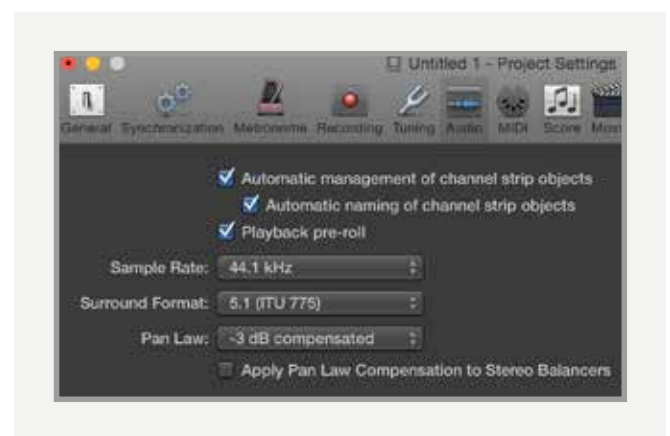


Once iD4 is selected as your device, set the appropriate buffer size for your session. If you are using the Monitor Mix knob to monitor your inputs, you can set the buffer size reasonably high to reduce the strain on your computer. If you are experiencing issues with playback stability or “overload” errors coming up, try increasing the buffer size.



If you are opening an existing session, iD4's sample rate will automatically change to match the project. If you are starting a new session, be sure to select the appropriate sample rate found in:

File > Project Settings > Audio



If you are monitoring your input signal on iD4, disable Logic's software monitoring to avoid hearing duplicate signals as this can be very off-putting.

Logic Pro > Preferences > Audio > General > Software Monitoring



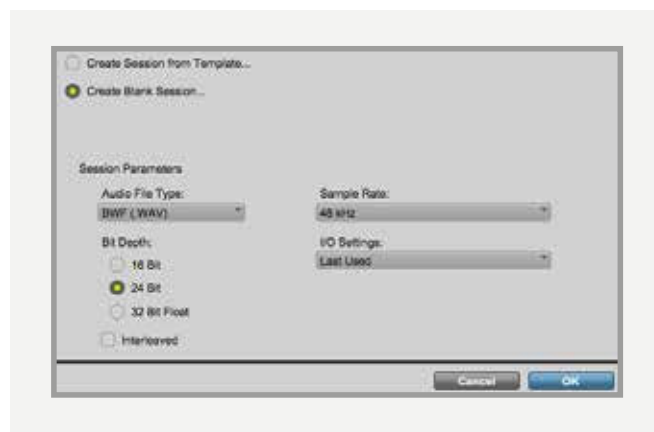


Pro Tools Setup

Operation with Pro Tools

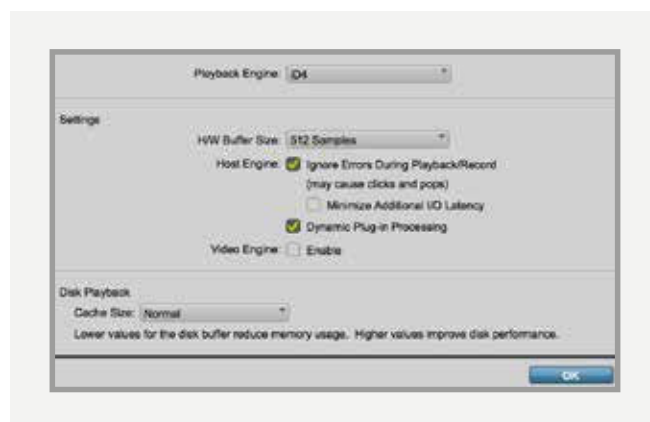
If using Windows, ensure that you have followed the installation instructions found on **page 10**.

With iD4 connected, launch Pro Tools and ensure that a new session is created at the desired sample rate. If you are using Windows, make sure that you have already set your Latency and Buffer Size settings in the iD System Tray before opening a project. Changing these mid session will result in Pro Tools needing to restart.



Playback Engine

Go to **Setup > Playback Engine...** and ensure that iD4 is set as the active playback device.



Go to **Setup > I/O...** to label your inputs and outputs and ensure that iD4 is correctly reporting 2-inputs and 2-outputs to and from Pro Tools.



If using the iD4 Monitor Mix knob to monitor your inputs, ensure that the input monitor buttons on the audio tracks are not selected, to avoid duplicate signals.



For more Pro Tools information consult your Avid user manuals & documentation.

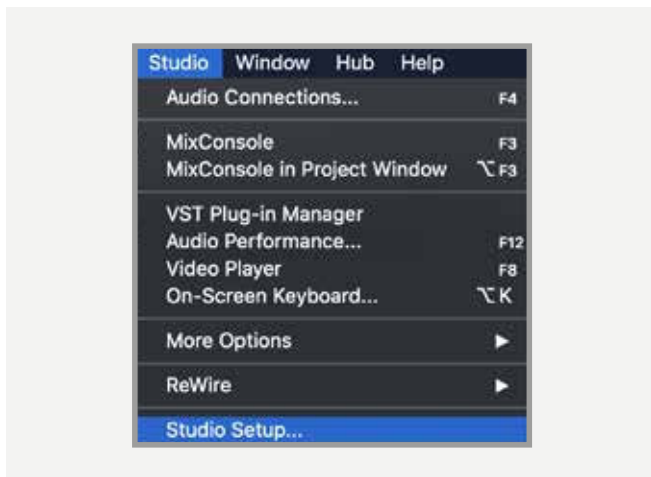


Cubase/Nuendo Setup

Operation with Cubase / Nuendo

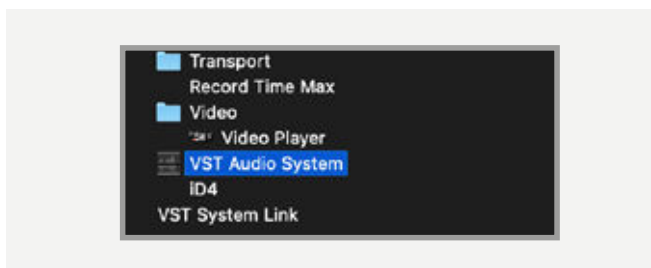
If using Windows, ensure that you have followed the installation instructions found on **page 10**.

With the iD4 plugged into your computer, launch Cubase or Nuendo and once a session is open, go to

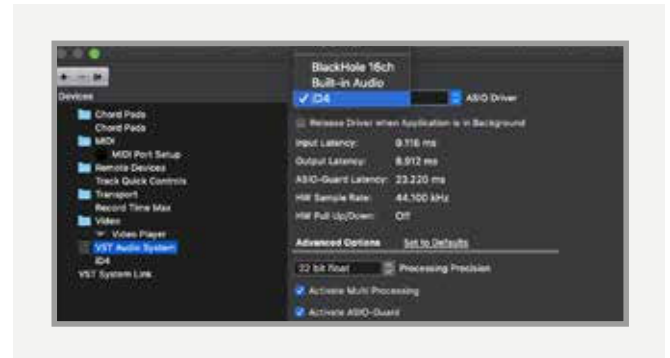


Studio > Studio Setup

Select VST Audio System in the devices menu.



Then select the Audient iD4 from the dropdown menu. You will be asked if this is okay, select "Switch"

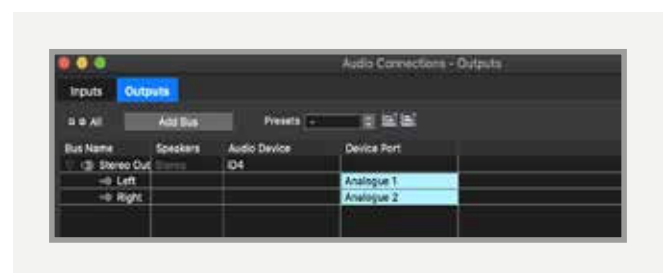


Close the VST device setup panel and navigate to the Audio connections panel:

Close the VST device setup panel and navigate to the VST connections panel:

Devices > VST Connections (F4)

Here you can ensure that all buses have been created in Cubase / Nuendo and therefore all ports are addressable in your session. Add new buses and assign them to the necessary I/O if required.



If using the iD4 Monitor Mix knob to monitor your inputs, ensure that input monitoring is turned off on the track.





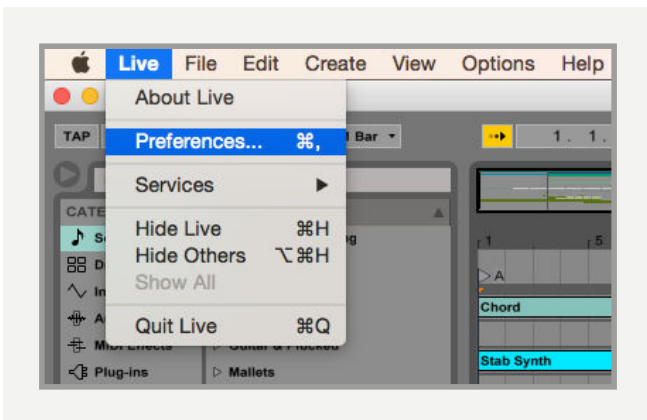
Ableton Live Setup

Operation with Ableton Live

If using Windows, ensure that you have followed the installation instructions found on **page 10**.

With iD4 plugged into your computer, launch Ableton Live and head straight to:

Live > Preferences > Audio

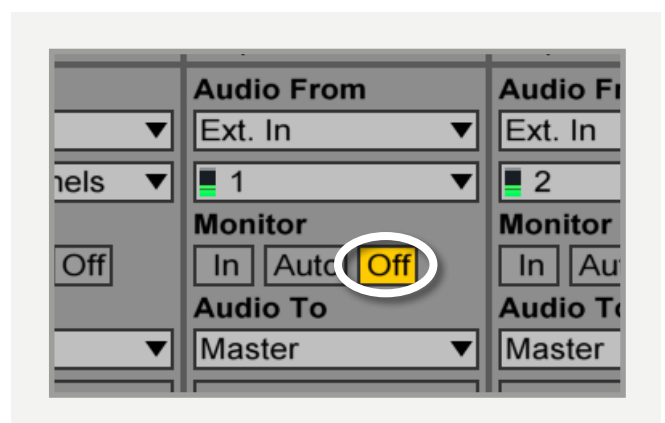


In the Audio tab make sure that iD4 is assigned as the playback device. you can also select the appropriate sample rate for your project, as well as the buffer size.

If using Windows, ensure to set the Latency and Buffer Size in the iD System Tray before changing it in Ableton.



If you are monitoring your inputs using the Monitor Mix knob, then you can keep the buffer size reasonably high to reduce the strain on your computer. In this case, you also need to make sure that input monitoring is turned off on the track in Ableton.



For more information about setting up audio I/O refer to your Ableton Live user manuals & documentation.

Troubleshooting & FAQ

Troubleshooting

“The unit will not power on”

Double check that the USB cable is plugged in firmly. If it still won't power on, try using a different USB port on your computer and possibly a different USB cable. If you are using a USB hub, try plugging iD4 directly into the computer.

“I get clicks and pops on DAW playback”

This is most likely to do with setting the buffer size too low for your computer. This can be caused by running very large projects with a lot of plugins and virtual instruments. Experiment with higher buffer sizes. Typically you want small buffer sizes for tracking or recording software synths to keep the latency low. However when mixing it is fine to set a slightly higher buffer size as latency is not so much of a problem.

It is also possible for driver conflicts to cause clicks and pops. For further details go to:

support.audient.com

“When I connect to my computer, I cannot play any audio out from iD4”

Firstly, double check that the USB cable connecting iD4 to your computer is functional and attached at both ends. Then make sure that iD4 is set as the active playback device in your DAW and computer:

System Preferences > Sound > Output Tab > Audient iD4 (macOS)

Control Panel > Hardware and Sound > Sound > Manage Audio Devices > Audient iD4 (Windows)

Finally, check that the Monitor Mix knob is set to DAW and not all the way to Input.



“I keep getting loud feedback in my speakers”

This is most likely caused by monitoring your microphone input while your speakers are on in the same room. Please make sure that you either move the monitor mix knob all the way to DAW if you aren't wanting to monitor your input, or if you are, simply press the MUTE Speakers button and listen on headphones.

“I hear an echo when recording”

This is most likely due to input monitoring being enabled in the workstation while also using the zero latency monitoring in iD4. For more information on this see page 13.

FAQs

For more information and bug support, please search our online Help Centre which can be found here:

support.audient.com

For technical support please create a ticket in our online support system, which can also be found in the support section of our website (see link above).

Technical Specifications



D.I / Instrument Input:

RANGE:	40dB
LINEUP:	12dBu = 0dBFS
THD+N @ 0dBu:	0.1%
SNR:	100dBu A-Weighted
FREQUENCY RESPONSE - MIN GAIN	±0.5dB 10Hz to 20kHz

Analogue to Digital Converter:

THD+N @ -1dBFS:	0.001%
DYNAMIC RANGE:	120dB A-Weighted
FREQUENCY RESPONSE:	±0.5dB 10Hz to 40kHz

Line Outputs (DAC):

LINEUP:	12dBu = 0dBFS
THD+N @ -1dBFS:	0.0006%
DYNAMIC RANGE:	125.5dB A-Weighted
CROSSTALK:	>120dB
FREQUENCY RESPONSE:	±0.1dB 10Hz to 40kHz

1/4" TRS JACK: Tip (Hot), Ring (Cold) & Sleeve (Shield)

Headphone Outputs:

(Measurements with 100k load)

LINEUP:	18dBu = 0dBFS
THD+N @ -1dBFS:	0.0009%
DYNAMIC RANGE:	125.5dB A-Weighted
CROSSTALK:	>116dB
FREQUENCY RESPONSE:	±0.1dB 10Hz to 40kHz
MAXIMUM LEVEL @ 30R:	2.59V Peak, 1.827V RMS, 223mW
MAXIMUM LEVEL @ 62R:	4.18V Peak, 2.95V RMS, 280mW
MAXIMUM LEVEL @ 600R:	7.72V Peak, 5.46V RMS, 100mW
1/4" TRS JACK:	Tip (Left), Ring (Right) & Sleeve (Shield)

Microphone Preamplifier:

GAIN RANGE:	58dB
LINEUP:	12dBu = 0dBFS
MIC MAX INPUT LEVEL:	12dBu
MAX INPUT LEVEL:	21dBu
INPUT IMPEDANCE (Mic):	2.8k
INPUT IMPEDANCE (Line):	>8k
THD+N @ 0dBu	0.00170%
THD+N @ 0dBu MAX GAIN:	<0.04%
SNR:	101dBu A-Weighted
EIN:	129dB A-Weighted
CMRR @ 1k:	>75dB
FREQUENCY RESPONSE - MIN GAIN	±0.5dB 10Hz to 40kHz

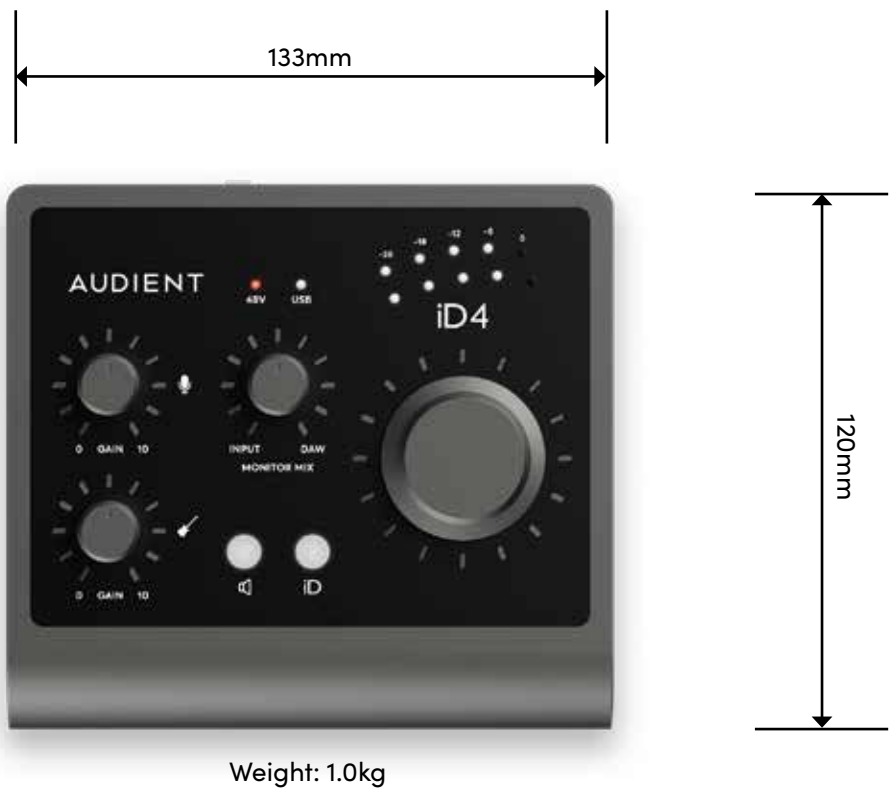
USB-C High Speed:

BUS POWER:		
MIN REQUIREMENT:	0.9A @ 5V	>=USB 3.0 Port
MAX REQUIREMENT:	1.5A @ 5V	USB-C: Provides higher headphone outputs levels

No. of INPUT CHANNELS:	2	(2 Analogue)
No. of OUTPUT CHANNELS:	2	(2 Analogue)

DSP MIXER LATENCY:	ROUND TRIP (in-to-out)
	44.1kHz 0.65mS
	48.0kHz 0.6mS
	88.2kHz 0.33mS
	96.0kHz 0.31mS

Dimensions



Warranty

Warranty Statement

Your iD4 comes with a manufacturer's warranty for one year (12 months) from the date of despatch to the end user.

The warranty covers faults due to defective materials used in manufacture and faulty workmanship only.

During the warranty period Audient will repair at its discretion or replace the faulty unit provided it is returned carriage paid to an authorised Audient service centre. We will not provide warranty repair if in our opinion the fault has resulted from unauthorised modification, misuse, negligence or accident.

We accept liability to repair or replace your iD4 as described above. We do not accept any additional liability. This warranty does not affect any legal rights you may have against the person who supplied this product – it is additional to those rights.

Warranty Limitations

This warranty does not cover damage resulting from accident or misuse. The warranty is void unless repairs are carried out by an authorised service centre. The warranty is void if the unit has been modified other than at the manufacturer's instruction. The warranty does not cover components which have a limited life, and which are expected to be periodically replaced for optimal performance. We do not warrant that the unit shall operate in any other way than as described in this manual.

Audient Ltd
Aspect House
Herriard
Hampshire
RG25 2PN
United Kingdom

Tel: +44 (0) 1256 381944
audient.com

Service

Service Information

iD4 contains no user-serviceable components, please refer to qualified service personnel for diagnosis and repair. Your warranty will be void if you tamper with the device at component level. If you have any questions with regard to the repair, please contact Audient Ltd.

If your unit is in warranty, please contact your dealer directly for a repair or replacement (at the discretion of the dealer).

For out of warranty repairs, please contact Audient Ltd, after which a **Return Materials Authorization** (RMA) number will be assigned. This number will serve as a reference for you and helps facilitate and expedite the return process. When the unit is returned please include this RMA number along with a description of the fault inside the packaging box.

To request an RMA, access technical support & FAQs, ask for troubleshooting assistance or make an enquiry, please visit: support.audient.com

Glossary

A	Amperes
ADAT	Alesis Digital Audio Tape
ADC	Analogue to Digital Converter
DAW	Digital Audio Workstation
ASP	Analogue Signal Processing
CPU	Central Processing Unit
CUE	Artist Headphone Mix
DAC	Digital to Analogue Converter
dB	Decibel
dBu	Decibel referenced to 0.775Vrms = 0 dBu
dBFS	Decibel Full Scale
DC	Direct Current
D.I	Direct Injection (Instrument Input)
DoC	Declaration of Conformity
DSP	Digital Signal Processing
EQ	Equaliser
FAQ	Frequently Asked Questions
FCC	Federal Communications Commission
GB	Gigabyte
GUI	Graphical User Interface
HPF	High Pass Filter
HV	High Voltage
i/o	Input / Output
JFET	Junction Field Effect Transistor
LED	Light Emitting Diode
RoHS	Restriction of Hazardous Substances
RAM	Random Access Memory
S/PDIF	Sony Philips Digital Interface Format
THD+N	Total Harmonic Distortion + Noise
TRS	Tip Ring Sleeve (1/4" Jack Balanced)
TS	Tip Sleeve (1/4" Jack Unbalanced)
USB	Universal Serial Bus
V	Volts
XLR	Extra Live Return, Extremely Low Resistance, Canon X Series, Latching, Resilient Rubber Compound... or make up your own!