

Highlights:

- High-end sound experience
- Ultra-flat frequency response
- Weatherproof - IP65 rating
- Salt spray and UV resistant
- Hydrophobic cloth behind aluminum grill
- Multi-tapping 70V / 100V line transformer
- Unique CleverMount+™ mounting system
- Incline and rotatable in any direction
- Stunning designed and elegant looking ABS enclosure

Product information:

The ATEOxM series are extraordinary loudspeakers especially designed for fixed installation in- & outdoor applications, ranging from modern residential applications to the most demanding designer applications in environments such as retail stores, pubs, restaurants or even clubs.

The ATEO4M is the 4" version with a 1" dome tweeter and a 4" Mid /Low-frequency driver, ensuring a true to- nature, high-fidelity reproduction of music and speech, whilst maintaining an ultra-flat frequency response. It features a stunningly designed and elegant-looking weatherproof ABS housing which is fitted with high-quality components. What makes this loudspeaker range so exceptional is the specially designed mounting bracket using the weatherproof CleverMount+™ technology, making the loudspeaker cabinet flow together with the mounting bracket providing great ease for installing the loudspeaker in one good-looking entity. This design loudspeaker forms the ideal solution for fixed-install indoor applications.

With the improved CleverMount+™ innovation, mounting and connection of the loudspeaker happens in seconds after attaching the wall plate to the desired location. During installation, the wires can easily be connected to the integrated WAGO connectors. For ease of installation & modification, the ATEOxM loudspeakers come with an external power tap selection switch located on the rear of the speaker. Like this, it's really child's play to install a large number of loudspeakers in no time.

All ATEOxM series speakers are available in black (/B) or white (/W).

Applications:

- Bars & Restaurants
- Retail
- Education
- Hotels
- Corporate
- Residential
- Clubs



Certification:



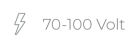
Properties:



Impedance:

Ω 8 Ohm Ω 16 Ohm

Voltage:



System specifications:

Speaker type		Full range
Peak power handling		140 W
Program power handling		70 W
RMS/AES power handling		35 W
Impedance		8 Ω (ATEO4M)
		16 Ω (ATEO4DM)
Incline angle	Left	30°
	Right	30°
	Bottom	30°
	Top	5°
Sensitivity (1W/1m)		86 dB
Sound Pressure (Max. W/1m)	@ 8 Ω	101 dB
	@ 100 V	100 dB
Frequency	Response (\pm 3 dB)	100 Hz - 20 kHz
	Range (-10 dB)	65 Hz - 20 kHz
Dispersion	Horizontal	130°
	Vertical	130°
Connectors		6 x WAGO terminal block connections
Drivers		1" Dome tweeter
		4" MF / LF Woofer
Line Transformer Tappings	1	208 Ω - 100 V / Not used - 70 V / 24 W
	2	417 Ω - 100 V / 24 W - 70 V / 12 W
	3	833 Ω - 100 V / 12 W - 70 V / 6 W
	4	1667 Ω - 100 V / 6 W - 70 V / 3 W
Ingress Protection rating		IP65

Product Features:

Dimensions		136 x 244 x 153 mm (W x H x D)
Weight		2.050 kg
Operating temperature		-20 °C ~ 60 °C
Accessories	Included	Allen-key wrench
Mounting		Weatherproof CleverMount+™
Construction		ABS
Front finish		Aluminium grill with hydrophobic cloth
Colours		Black (RAL9005) (ATEO4M/B, ATEO4DM/B) White (RAL9003) (ATEO4M/W, ATEO4DM/W)

Variants:

- ATEO4M/B - Black version - 8Ω and 100V
- ATEO4M/W - White version - 8Ω and 100V
- ATEO4DM/B - Black version - 16Ω
- ATEO4DM/W - White version - 16Ω

Shipping & Ordering:

Packaging	Cardboard box (pair)
Shipping weight & volume	5.000 kg - 0.015 Cbm (2 pcs)