

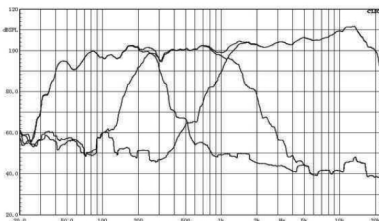
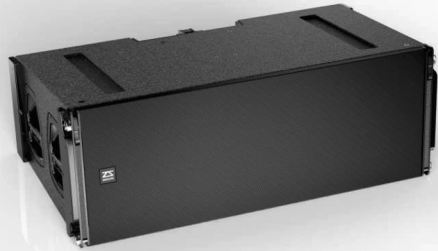
VCL

Applications

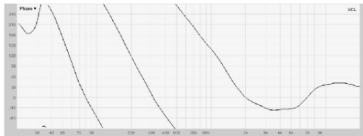
- ④ Touring performance
- ④ Stadium
- ④ Theatre

Feature

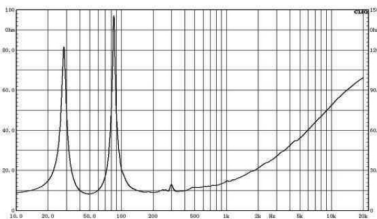
- ④ Large-scale, tri-amp, three-way line array
- ④ Presettable angle on the ground adjustable angle with manual hoister in the air
- ④ Neodymium high-sensitivity driver, maximum headroom
- ④ Rubber edge LF driver, extend low frequency



Frequency response



Phase response



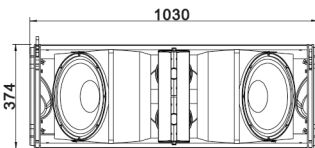
LF Impedance

Technical specification

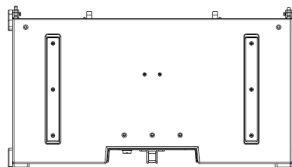
- ④ **FREQUENCY RESPONSE:** 50 Hz ~ 16 kHz (± 3 dB) 40 Hz ~ 18 kHz (-10 dB)
- ④ **NOMINAL COVERAGE**^(-0°@0): 100°(H) adjustable
- ④ **SENSITIVITY**(@ 1w/1m): HF:113 dB SPL / MF:105 dB SPL / LF:99 dB SPL
- ④ **POWER RATING**(AES): HF/MF/LF:160W/350W/900W
- ④ **NOMINAL IMPEDANCE:** HF/MF/LF:16/16/16 ohm
- ④ **MAXIMUM SPL:** HF:141 dB SPL peak
MF:136 dB SPL peak
LF:134 dB SPL peak
- ④ **DRIVERS:** LF 2 x 12" (75mm Voice coil) woofer
MF 1 x 10" (65mm voice coil) mid range
HF 2 x 2.5"(65mm voice coil) compression driver

Physical data

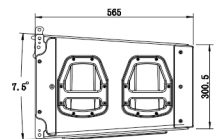
- ④ **DIMENSIONS**(HxWxD): 374 x 1030 x 565 mm / 15"x41"x22"
- ④ **WEIGHT:** 60 kg / 132 lbs
- ④ **CONNECTORS:** 2 x NL8 connectors
- ④ **SPEAKER CABLES:** 1+1-...LF, 2+2-...MF, 3+3-...HF,4+4-...N/C
- ④ **MATERIALS:** 18mm, 24mm Baltic birch plywood
- ④ **FINISH:** Black Polyurea paintings
- ④ **GRILLE:** Black epoxy mesh grille with acoustically reticulated cloth
- ④ **RIGGING:** 0, 1, 2, 3, 4, 5, 6, 7.5 degree adjustable



Front



Top



Side