



www.skothz.com

WM-522 Series

Professional Dual UHF Wireless Microphone System

en User Manual

Contents



Contents	1
Main Features	1
Parts (Receiver)	2
Receiver Operation	3
Handheld Microphone Operation	4
Bodypack Transmitter	5
Sync Operation	5
Technique Specification	6
Items contained in all sets	6

Main Features

- Dual channels Microphone set
- UHF Dual band 694.3 - 702.7 MHz & 748.3 - 757.7 MHz
- Total Bandwidth : 17.8 MHz
- Adopt digital circuit solution, preset 175 frequencies to avert interference frequency
- Splendid receiver White-text LCD display to indicate the Group, Channel, Frequency, RF level, AF level, Battery level working status.
- Auto-scan frequency function to search available frequencies.
- Working range: 80 meters
- IR Sync Technology for easy frequency setup
- Perfect for Large to Small Stages, Congress Halls to Conference Rooms, Speeches and Entertainment events

Technique Specification



RECEIVER

Carrier Frequency : 694.3 - 702.7 MHz & 748.3 - 757.7 MHz

Dynamic Range : 96 dB

Distortion : 0.3 %

Frequency Response : 30 Hz - 20 KHz / +- 2 dB

Signal / Noise Ration : 96 dB

Receiving Sensitivity : - 95 dBm

Transmission Delay : 3 ms

Power Supply : DC12 - 18 V 500 mA

Audio Output : 1 x 6.35 mm (400mV), 2 x XLR Balance Output (800mV)

HANDHELD MICROPHONE

Carrier Frequency : 694.3 - 702.7 MHz & 748.3 - 757.7 MHz

Power Output : 30 mW

Harmonic Radiation : -50 dBc

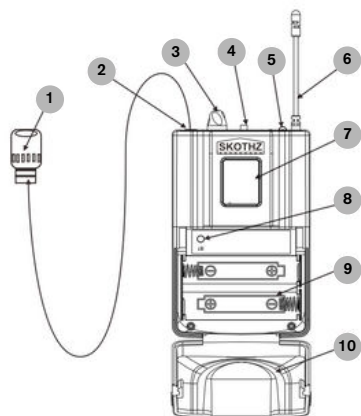
Battery : 2 x 1.5 V AA Battery

Battery Operation : 5 Hr

Items contained in all sets

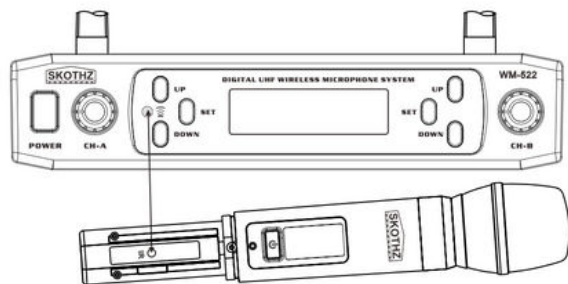
Quantity	Component
1	Receiver with 2 antennas
1	Receiver power supply
2	Microphone Handheld or Beltpack
2	Rechargeable AA Battery
1	Charger for AA Battery
1	Cable with Phone Jack
1	Hard case (Plastic)
1	User Manual

Bodypack Transmitter



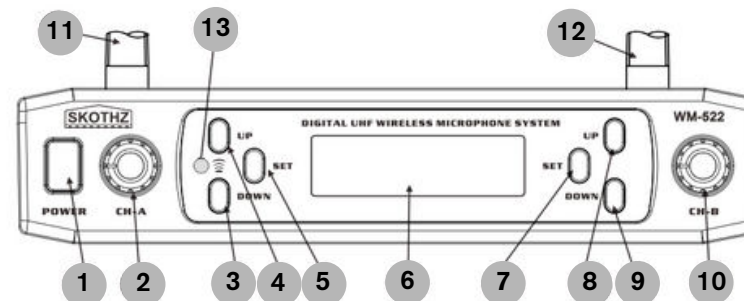
1. Microphone
2. Mini XLR input
3. - VOL + :
4. Power / Mute
5. Power light
6. Antenna
7. LCD Display
8. IR window
9. Battery sink
10. Battery cover

Sync Operation



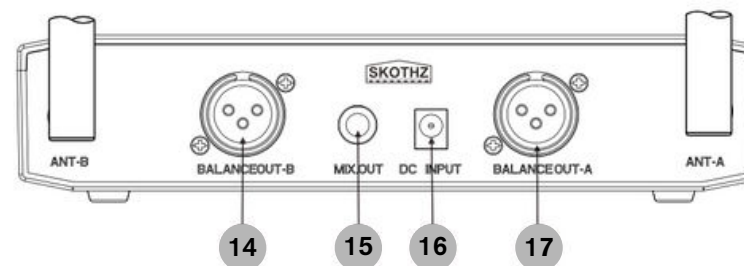
Long-press receiver's SET button to unlock screen, then click UP or DOWN to select Group, Channel item to switch available frequency, then long-press SET button again till the receiver IR WINDOW light flashing, meanwhile, keep handheld's IR WINDOW close to the receiver's IR WINDOW. When receiver's IR light stop flashing and see both receiver and handheld showing same frequency mean SYNC successfully.

Parts (Receiver)



1. Power
2. Vol. A
3. CH. A - Down
4. CH. A - Up
5. CH. A - Unlock / Sync
6. LCD Screen
7. CH. B - Unlock / Sync

8. CH. B - Up
9. CH. B - Down
10. Vol. B
11. Antenna - A
12. Antenna - B
13. IR Window



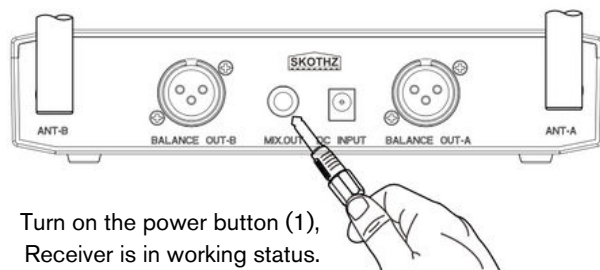
14. Balance Out B
15. Mix Out

16. DC Input
17. Balance Out A

Receiver Operation



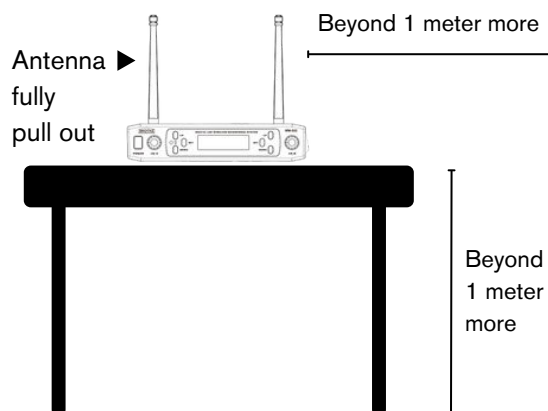
- Connect the power:
Connect the power cable to the DC socket (16) of the Receiver, make sure the adaptor is suitable before using the Receiver.
- Connect the audio cable:
Mix output: connect the audio cable (attached) to the MIX. OUT socket (15) while the other side connect to MIX. IN or AUX IN.



Note: Before turn on the Receiver, turn the volume control knob (2) & (10) to the minimum volume, adjust the volume as needed when the Receiver is working.

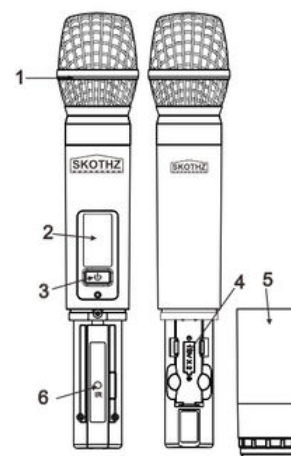
- Turn on the power button (1), Receiver is in working status.

⚠ Warnings of Receiver installation



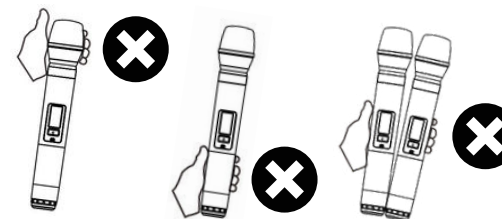
- Beyond 1 meter more away from the wall
- Beyond 1 meter more away from the floor
- Antenna fully pull out, or will effect receiving signal

Handheld Microphone Operation

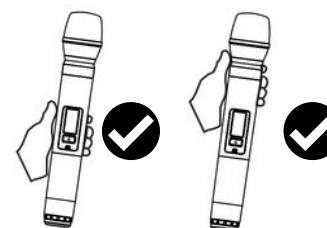


1. Microphone capsule: use to pick up sound.
2. Microphone display: indicates the working status
3. Power switch: Long press to ON/OFF, short press to mute handheld.
4. Battery Sink: insert 2 x 1.5V AA battery, note to insert in correct polarity.
5. Microphone tail tube
6. IR window

⚠ Handheld microphone holding ways



WRONG



CORRECT

- Keep distance of mouth and mic head less than 15cm.
- Avoid using mic head to point to speakers will protect the feedback.